

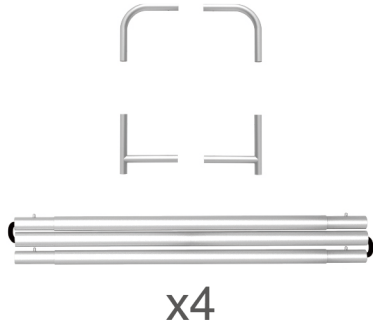
# INSTRUCTION



**10X10FT-BOOTH-O**

## STEPS

(1) Hardware

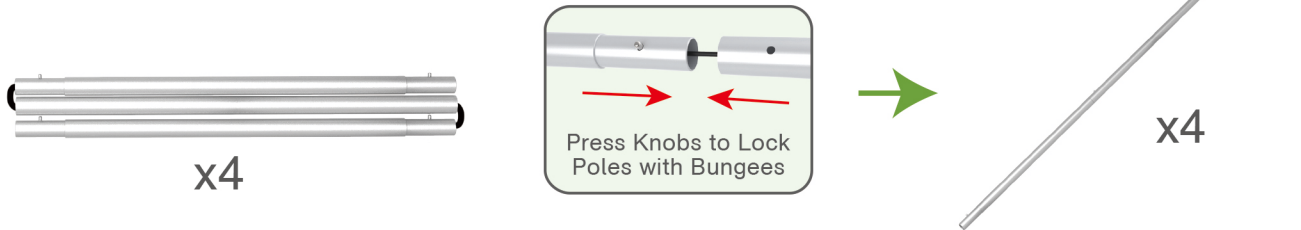


(2) Printed Graphic Fabric Banner (Optional)



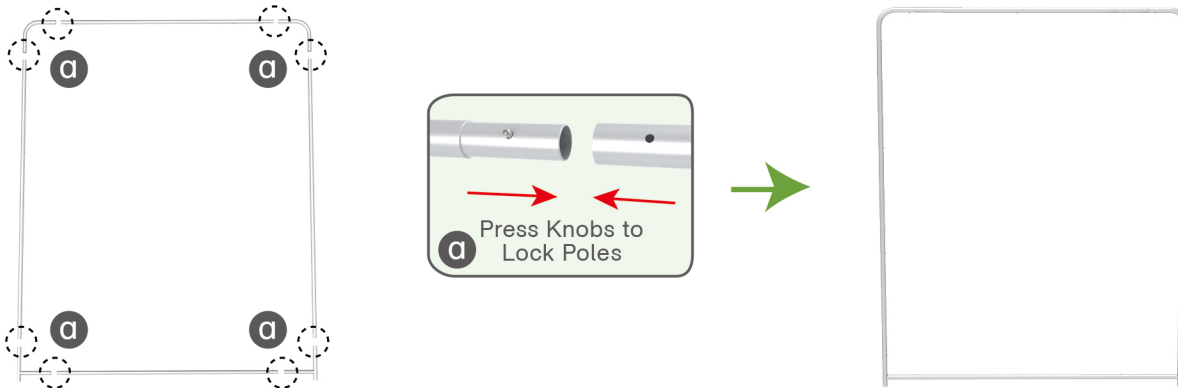
### STEP 01

Connect to make long poles according to labelings.



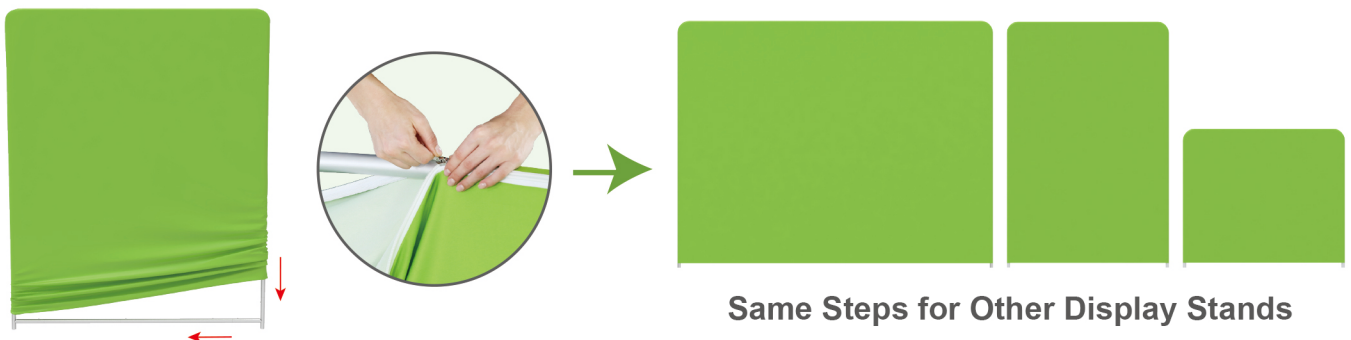
### STEP 02

Connect long poles with corner poles according to labelings.



### STEP 03

Slide fabric banner on frame from top and zip up at bottom.



## STEPS

(1) Hardware

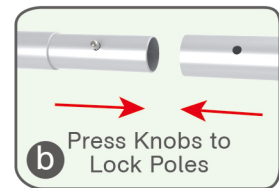
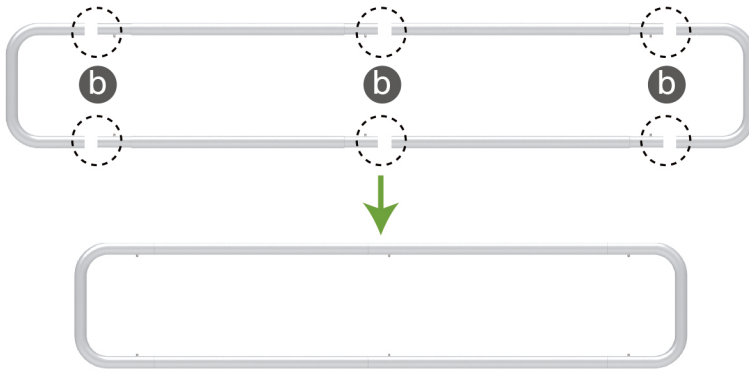


(2) Printed Graphic Fabric Banner (Optional)



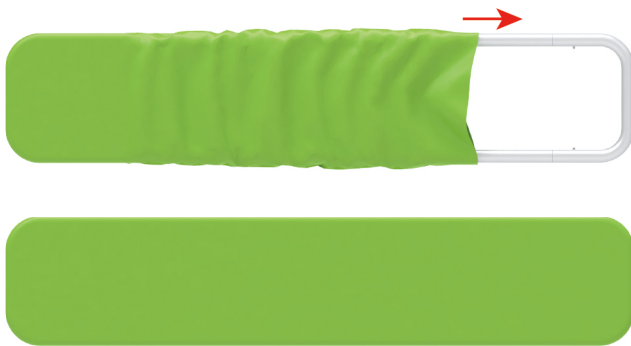
### STEP 01

Connect poles according to labelings.

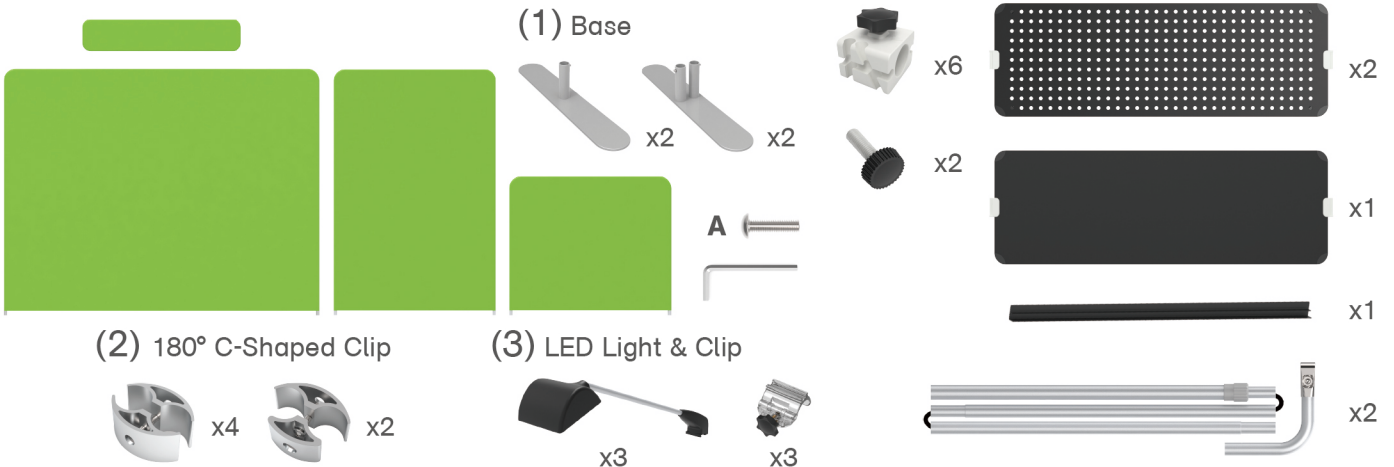


### STEP 02

Slide fabric banner on frame from left and zip up at right.

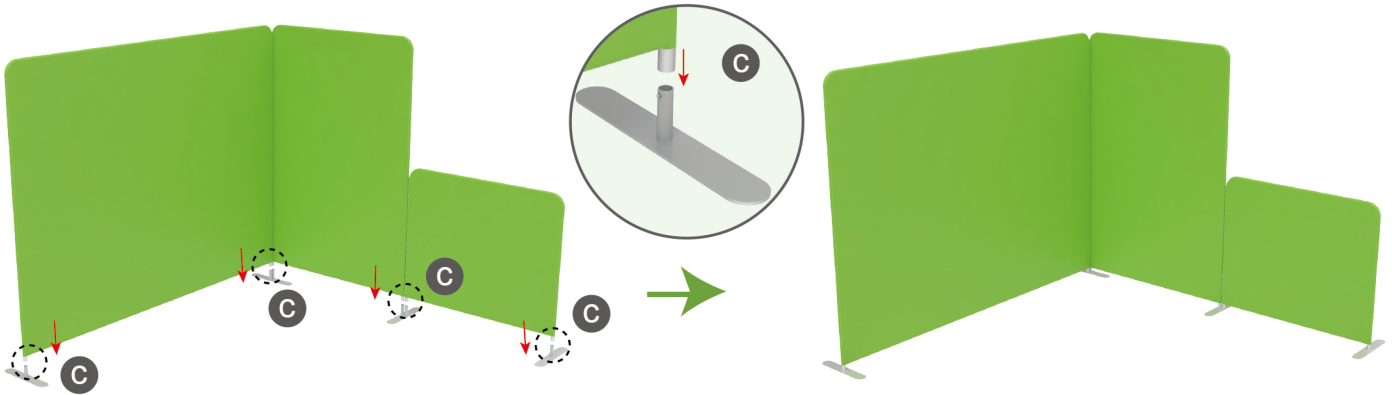


## Booth Set Assembly



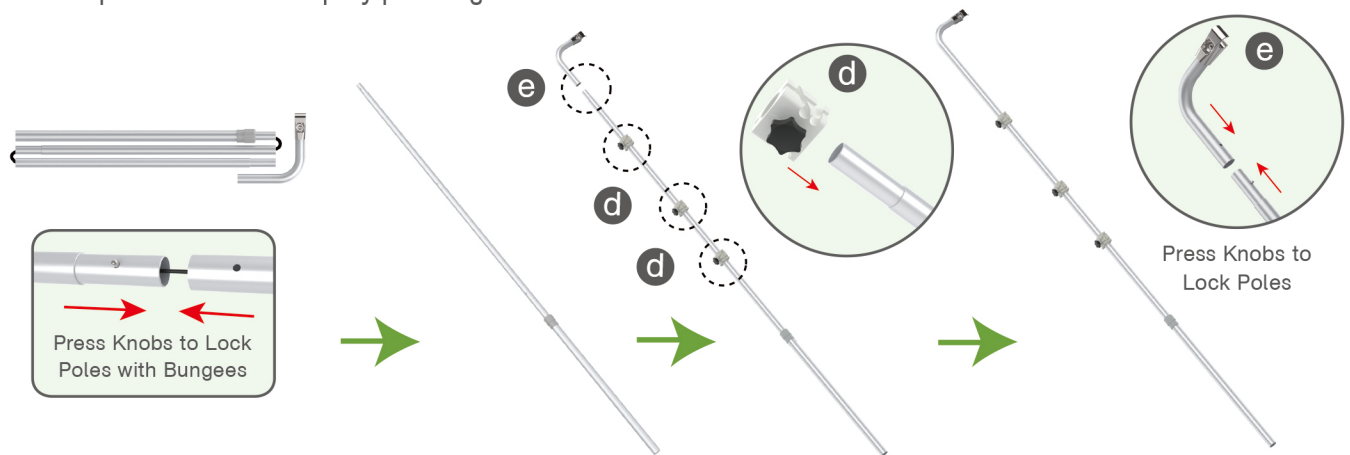
## STEPS

**STEP 01** Insert display stands onto feet by pressing their knobs.



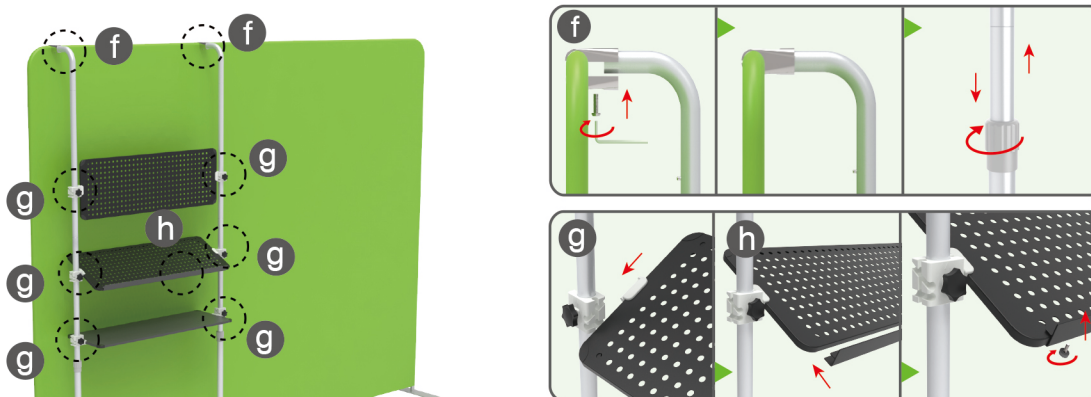
## STEP 02

Connect to make long poles according to labelings, slide three-way clips onto long poles, insert short curved poles onto their top by pressing their knobs.



## STEP 03

Connect long poles and display stand with clamps, adjust their height properly as needed by loosening and tightening screws.

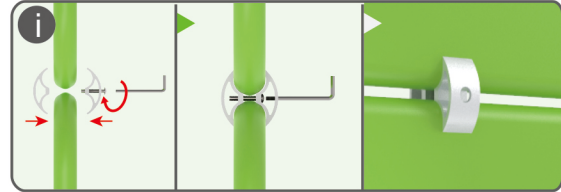
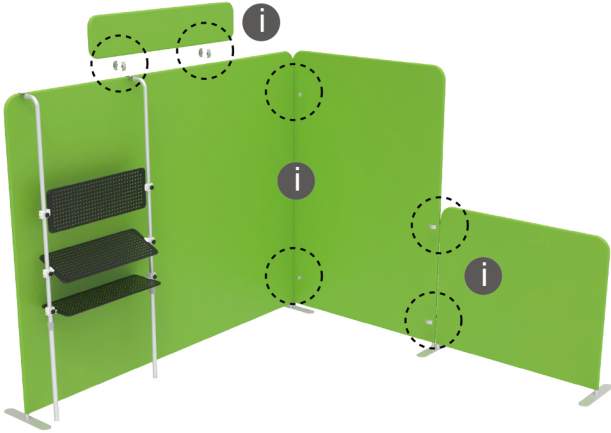


Clip into hanging boards based on directions of three-way clips & tightening with thumb screws, clip F-shaped bar onto hanging board with thumb screws.

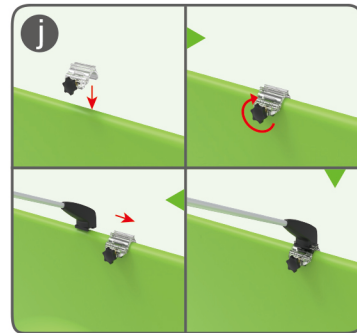
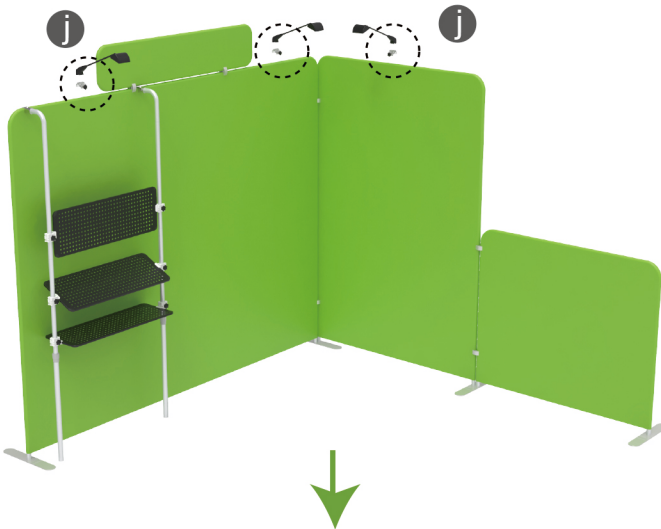


## STEPS

**STEP 04** Interconnect display stands with C-shaped clips.



**STEP 05** Screw light clips at top of display stands, slide lights onto them and adjust their direction.



**10X10FT-BOOTH-O**

## STEPS

(1) Durable Plastic Hard Case, Aluminum Support Poles

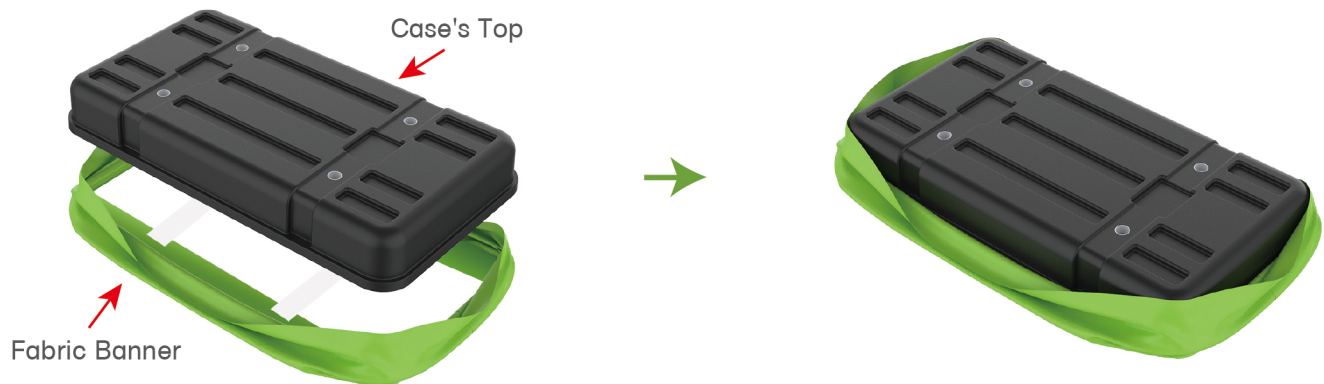


(2) Printed Graphic Fabric Banner



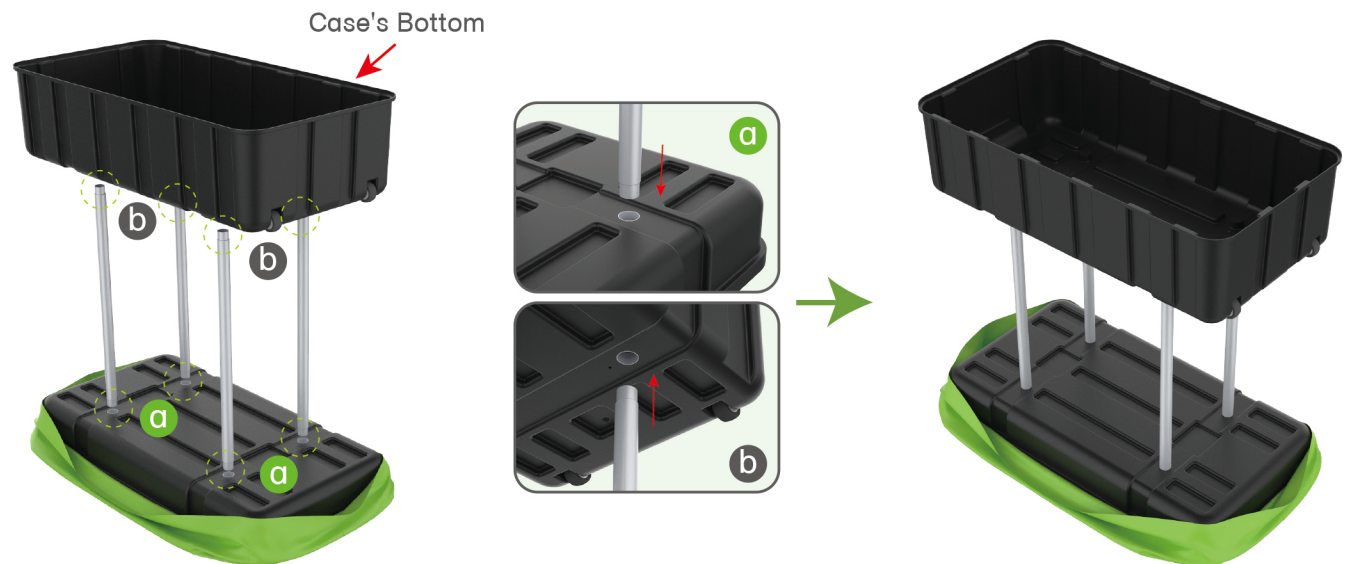
### STEP 01

Put hard case's top into fabric banner.



### STEP 02

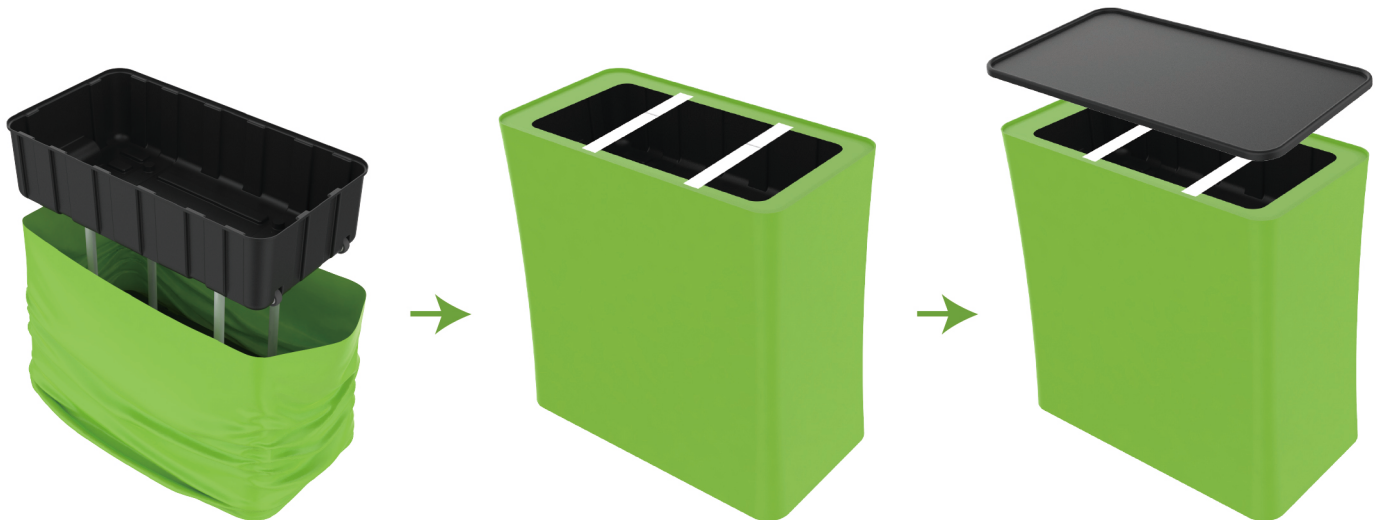
Insert support poles into hard case's top & bottom.



### STEPS

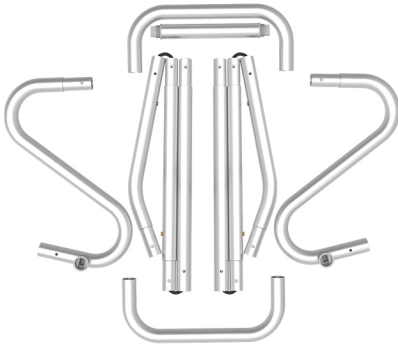
#### STEP 04

Wrap fabric banner from bottom to top & twist it to be smooth, lay hard case's intermediate panel on podium's top.



## STEPS

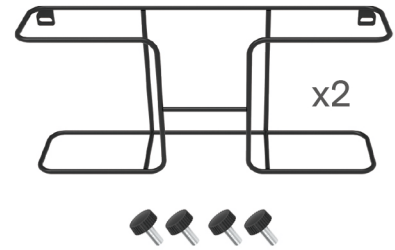
(1) Snap Tubes



(2) Printed fabric banner

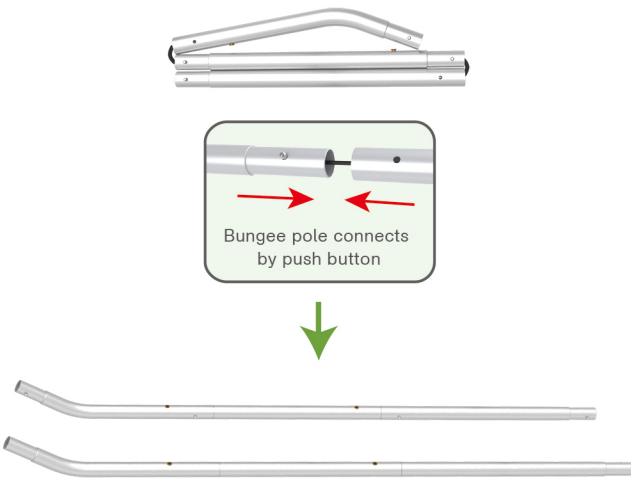


(3) Brochure rack x 2  
Screws x 4



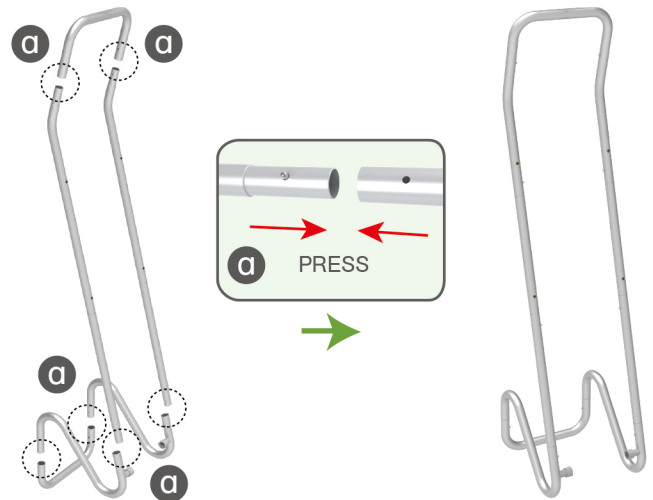
### STEP 01

To Connect the tubes according to the labellings



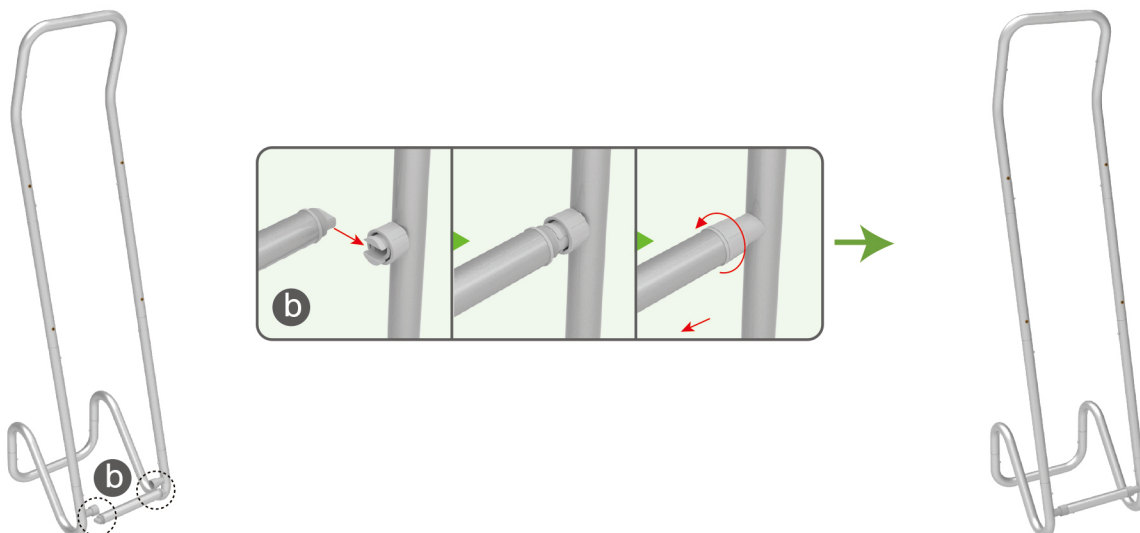
### STEP 02

To connect 2 long side tubes by the corner pieces



### STEP 03

To install the cross bar according to labellings

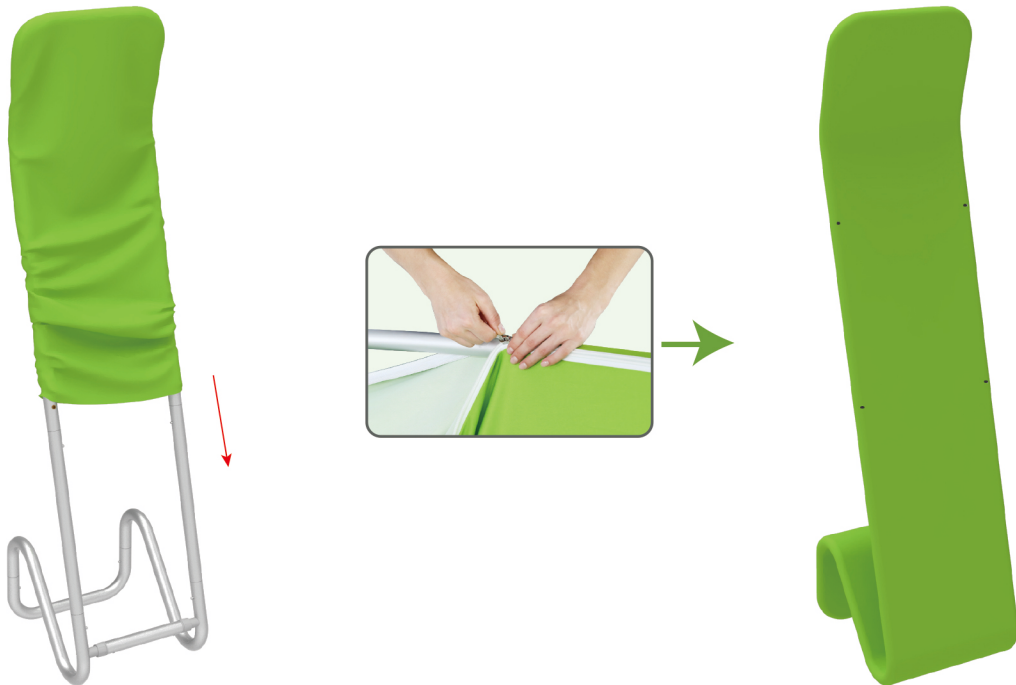




## STEPS

### STEP 04

To Wrap up the fabric banner from top to bottom and zip up.



### STEP 05

To install 2 racks by screws in position

