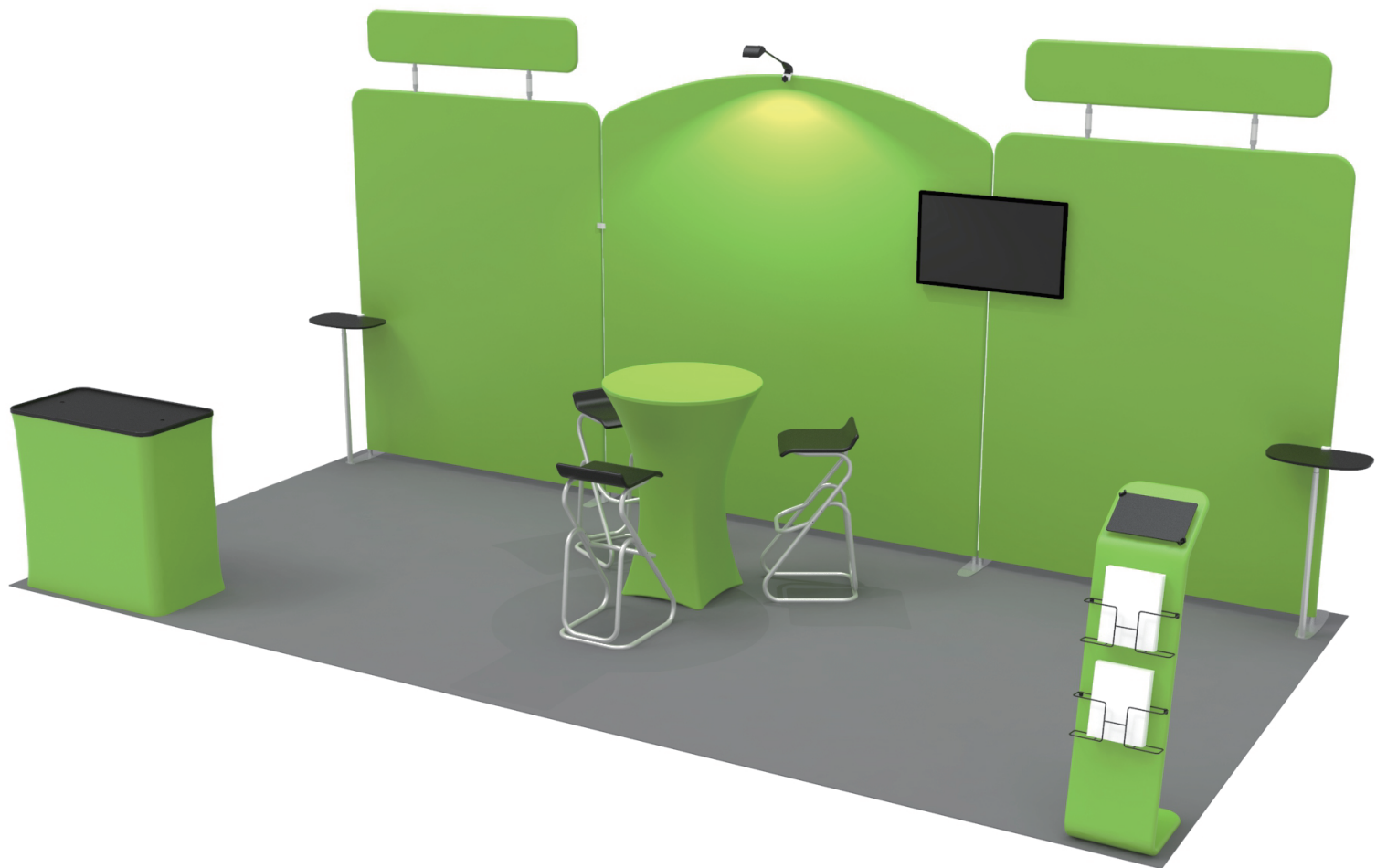


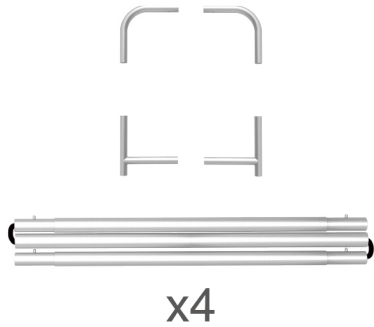
# INSTRUCTION



**10X20FT-BOOTH-06**

## STEPS

(1) Hardware

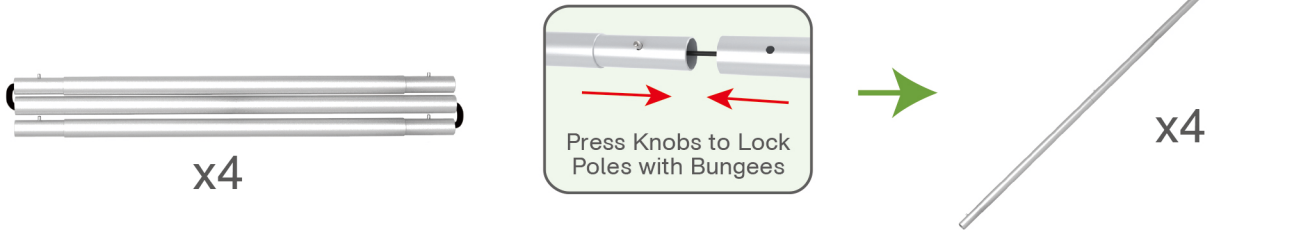


(2) Printed Graphic Fabric Banner (Optional)



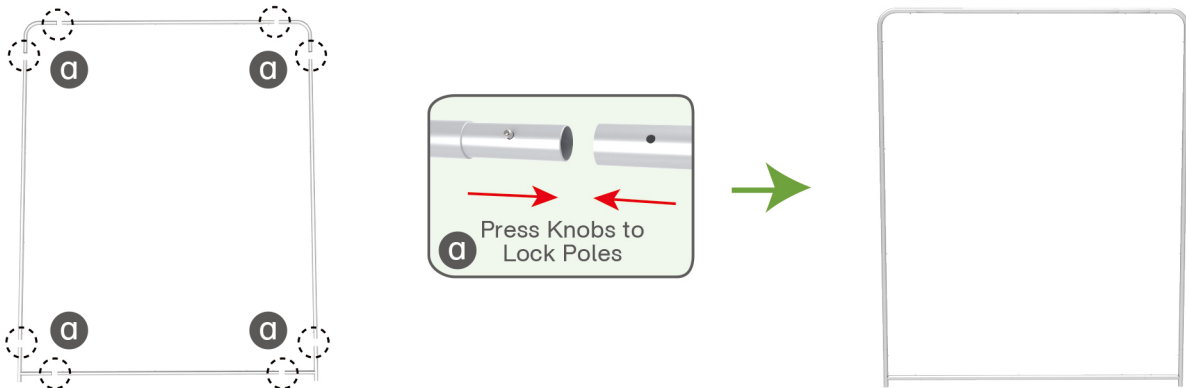
### STEP 01

Connect to make long poles according to labelings.



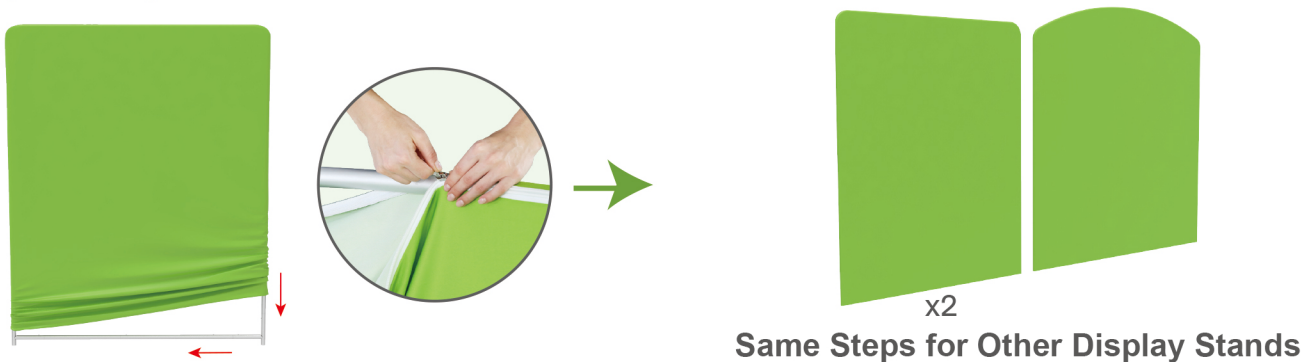
### STEP 02

Connect long poles with corner poles according to labelings.



### STEP 03

Slide fabric banner on frame from top and zip up at bottom.



## STEPS

(1) Hardware

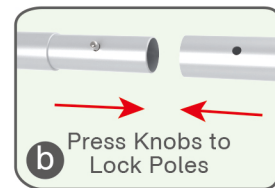
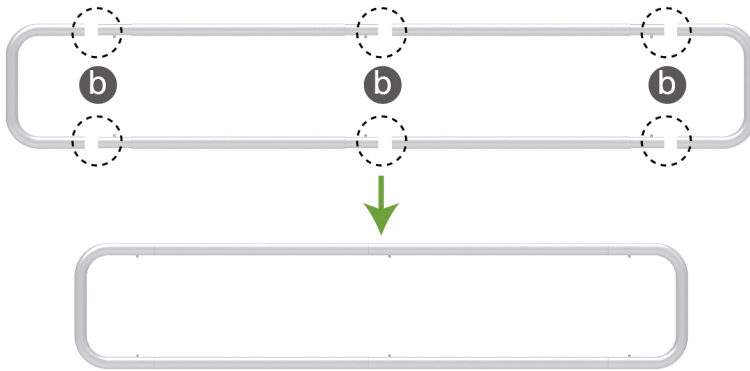


(2) Printed Graphic Fabric Banner (Optional)



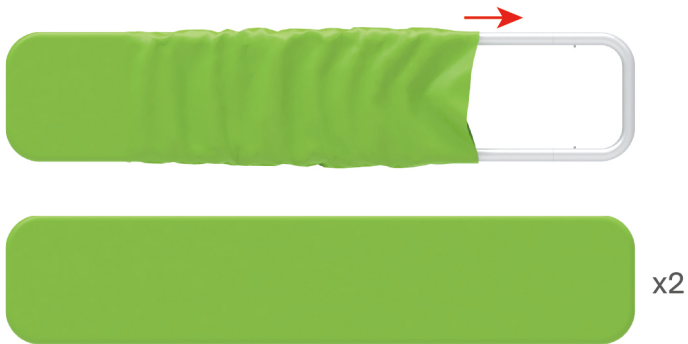
### STEP 01

Connect poles according to labelings.

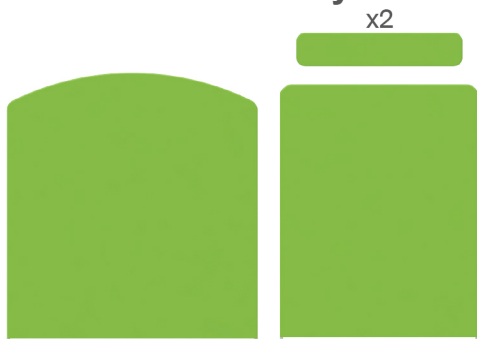


### STEP 02

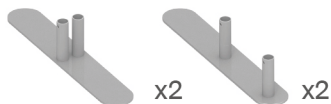
Slide fabric banner on frame from left and zip up at right.



## Booth Set Assembly



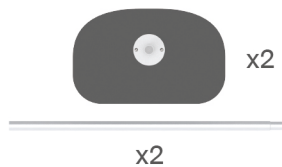
(1) Base



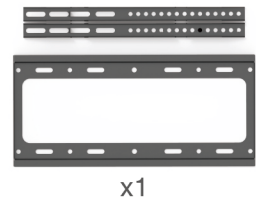
(2) LED Light & Clip



(4) MDF Board Table



(5) TV Mount

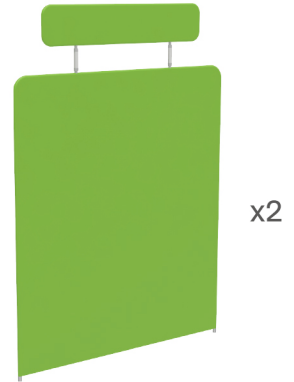
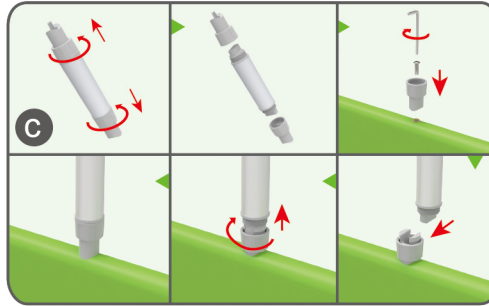
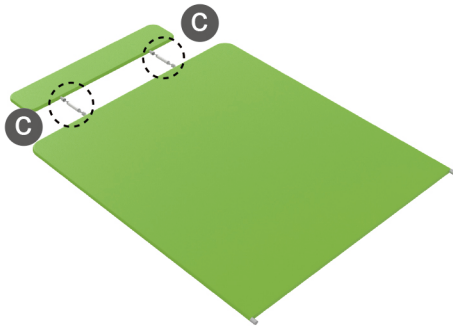


(3) 180° C-Shaped Clip

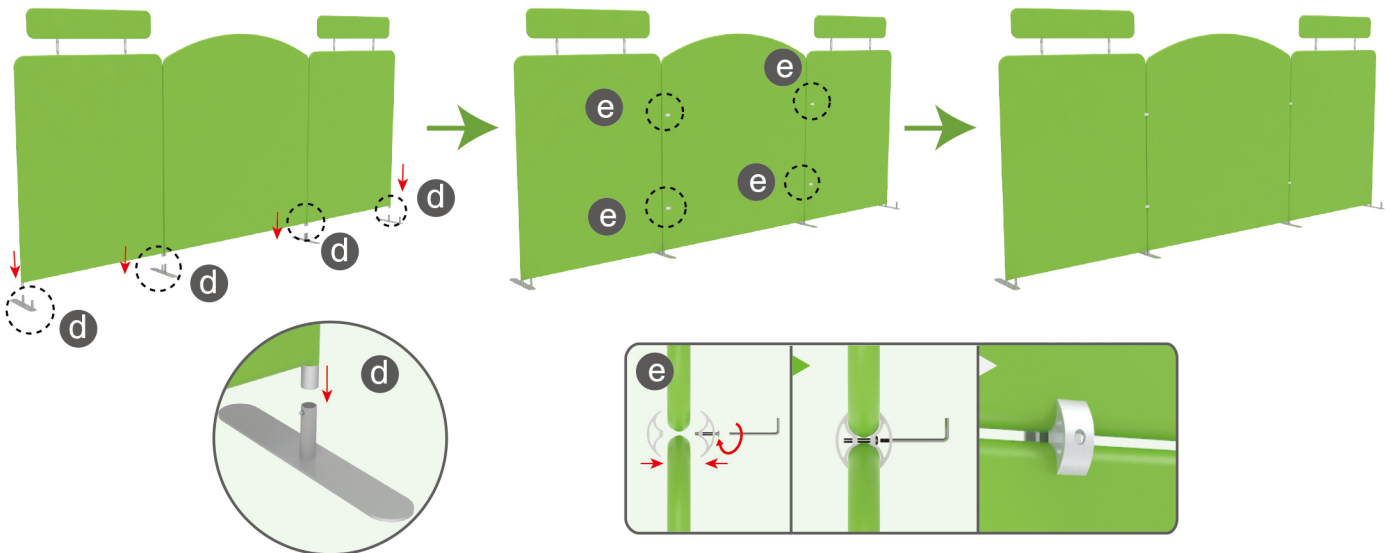


## STEPS

**STEP 01** Connect header and display stand with support poles.

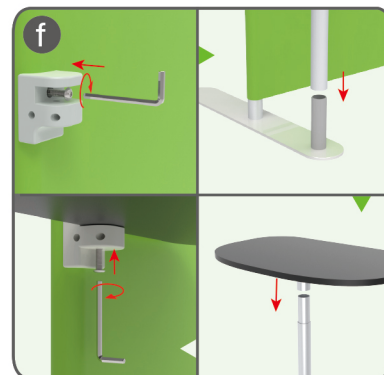
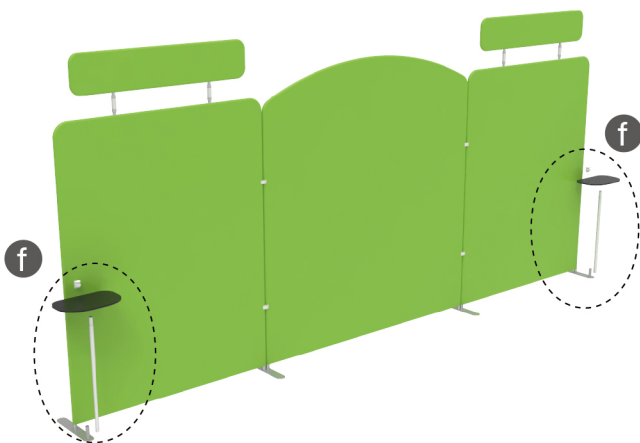


**STEP 02** Insert display stands onto feet by pressing their knobs, interconnect display stands with C-shaped clips.



**STEP 03**

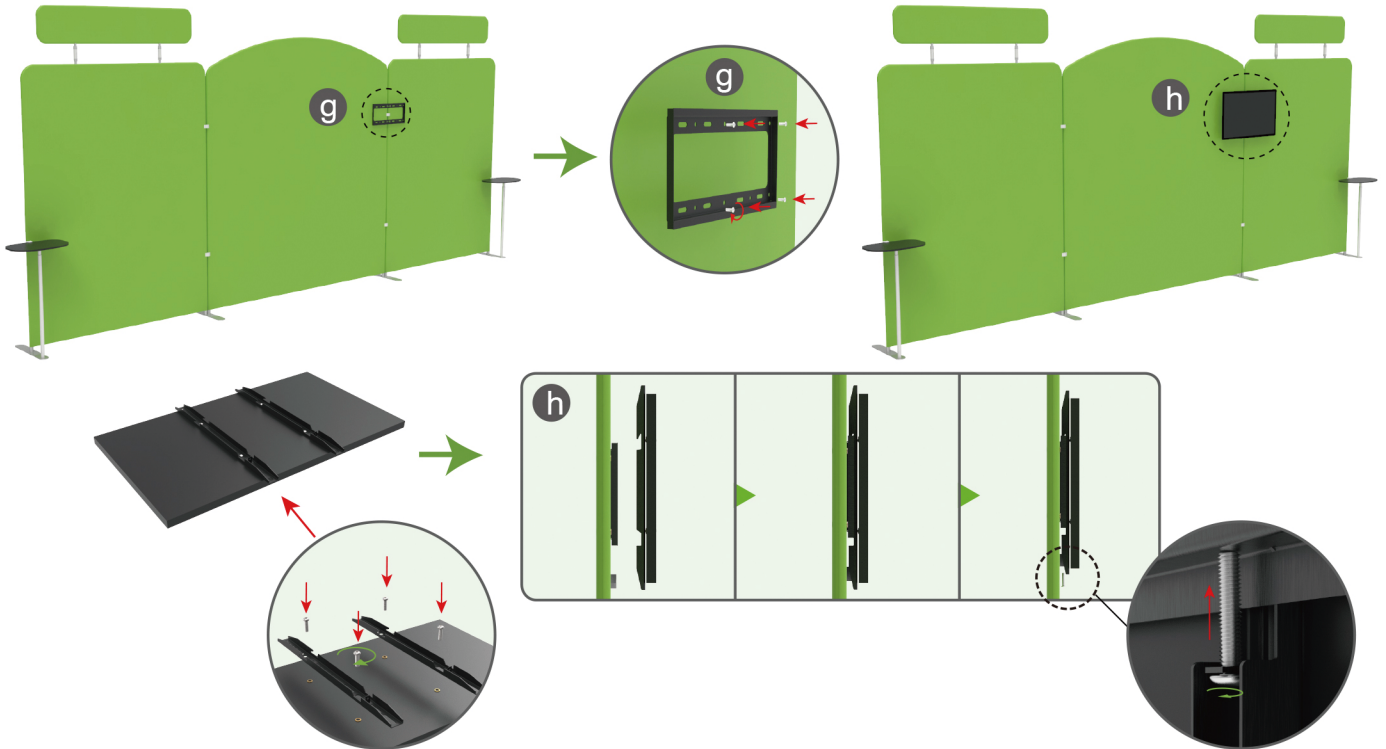
Insert pole into base, screw clamp with hex wrench, place MDF board onto pole & insert into clamp with screw.



## STEPS

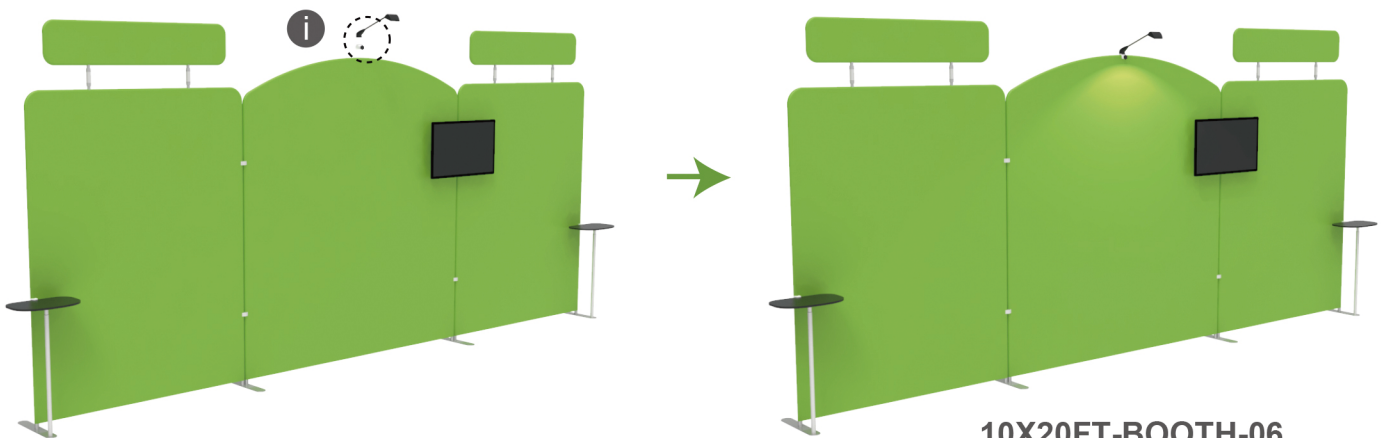
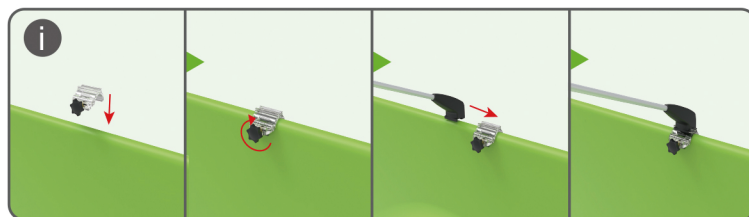
### STEP 04

Screw TV mount with hex wrench.



### STEP 05

Screw light clips at top of display stands, slide lights onto them and adjust their direction.



10X20FT-BOOTH-06

## STEPS

(1) Durable Plastic Hard Case, Aluminum Support Poles

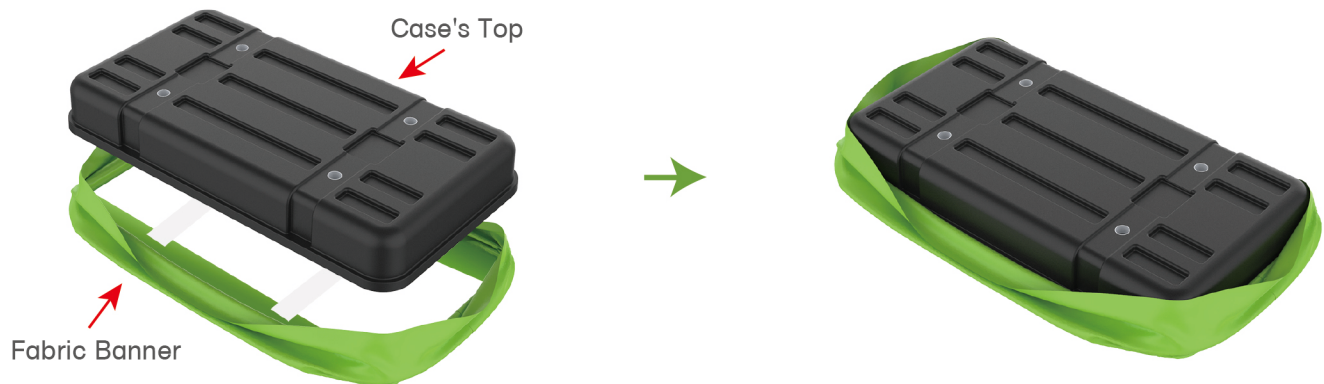


(2) Printed Graphic Fabric Banner



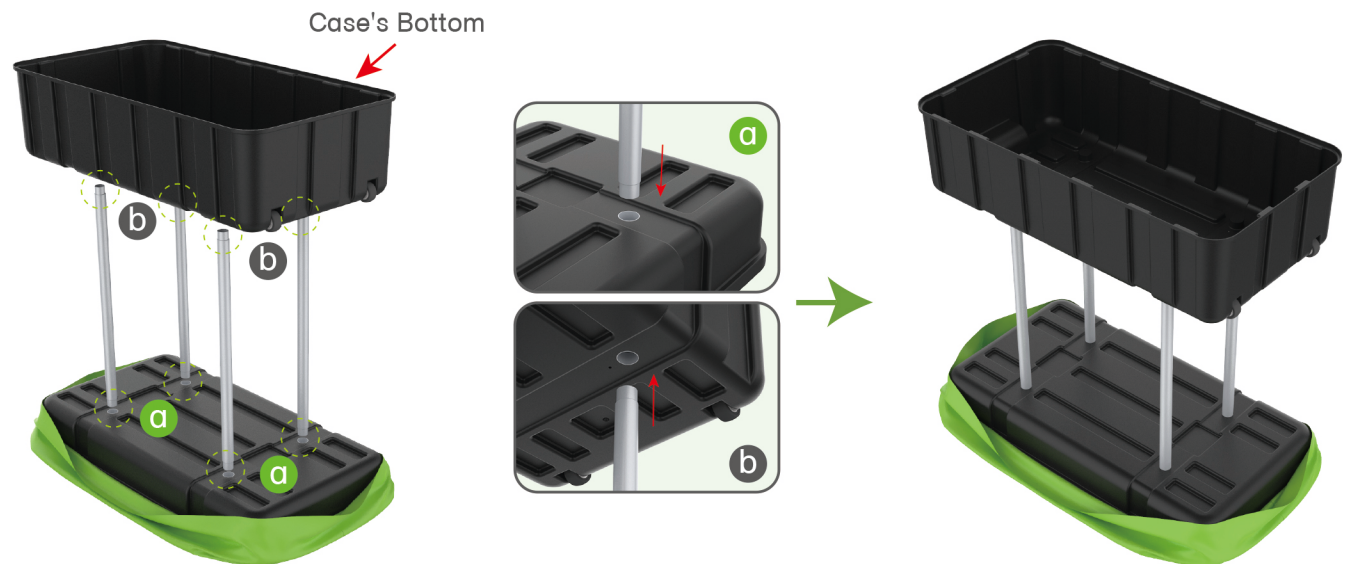
### STEP 01

Put hard case's top into fabric banner.



### STEP 02

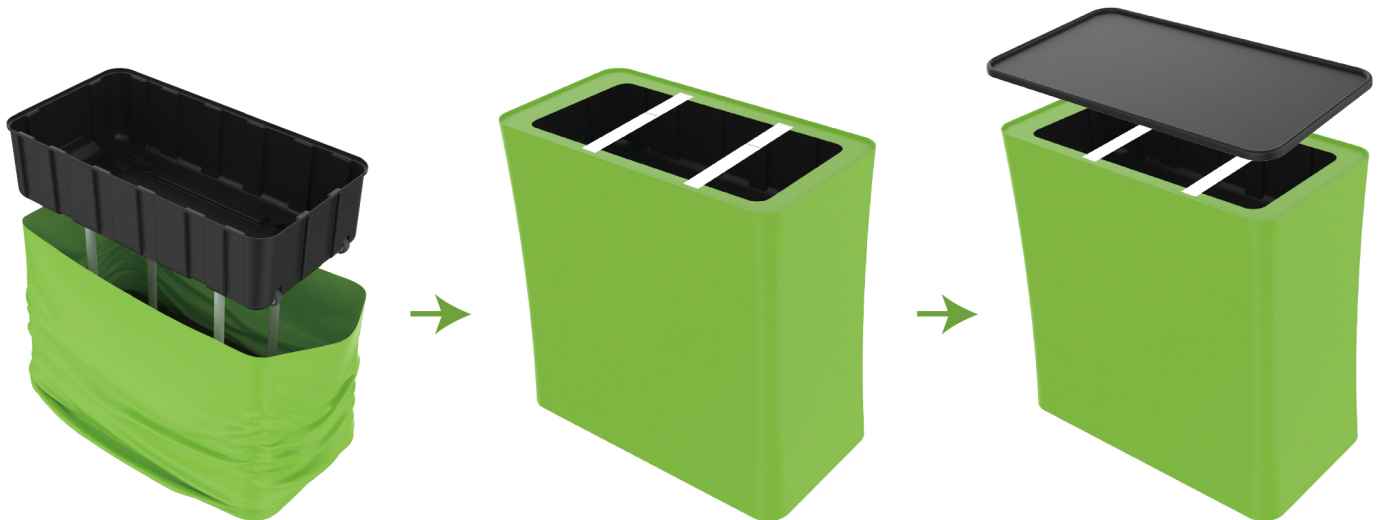
Insert support poles into hard case's top & bottom.



### STEPS

#### STEP 04

Wrap fabric banner from bottom to top & twist it to be smooth, lay hard case's intermediate panel on podium's top.

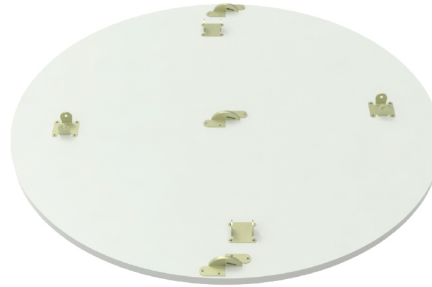


## STEPS

### (1) Hardware



### (2) Countertop Panel



### (3) Fixing Accessory

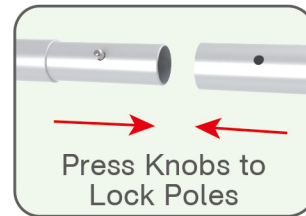


### (4) Printed Graphic Fabric Banner



#### STEP 01

Connect to make long poles according to labelings.



#### STEP 02

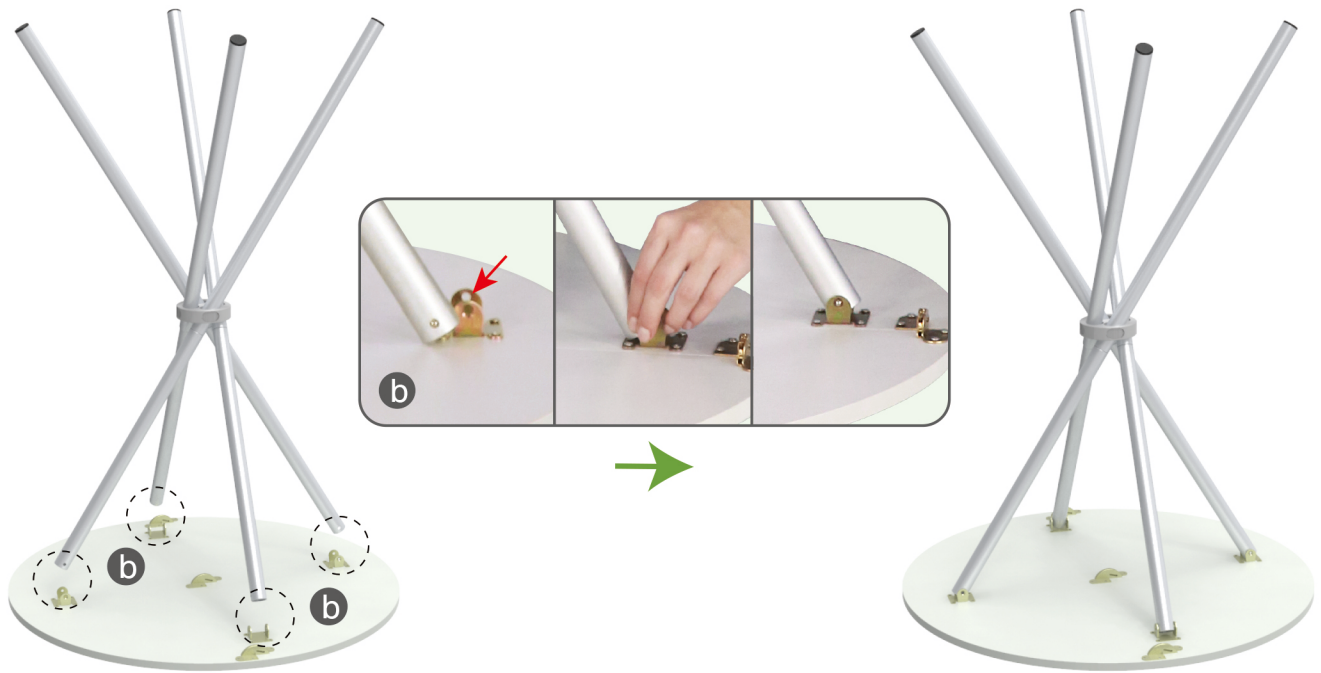
Insert poles into fixing accessory until you hear a 'Ding' sound to make poles' knobs clip into it & its concave parts pop out.





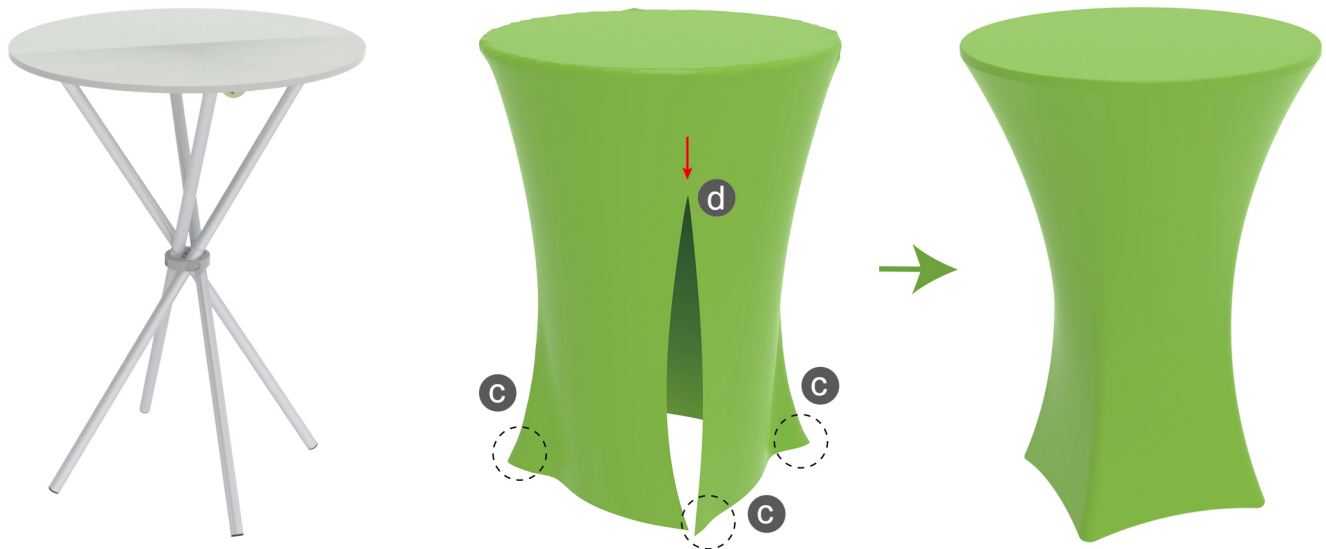
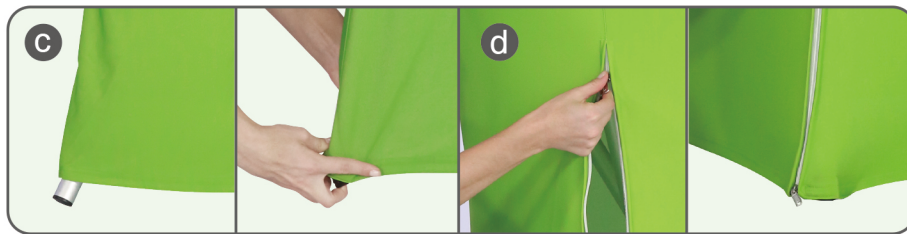
## STEPS

**STEP 03** Press poles' knobs to clip into countertop's slot.



**STEP 04**

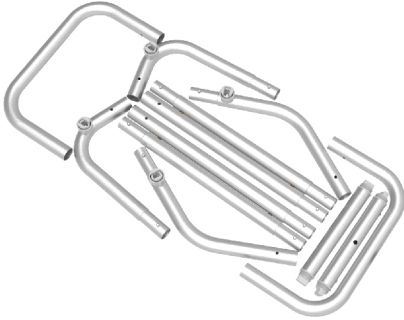
Wrap fabric banner from top to bottom, put poles into pockets & zip up.



★ One Tool (Hex Wrench) 

## STEPS

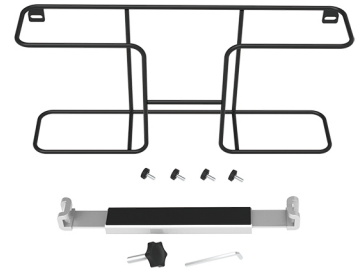
(1) Snap Tubes



(2) Printed fabric banner

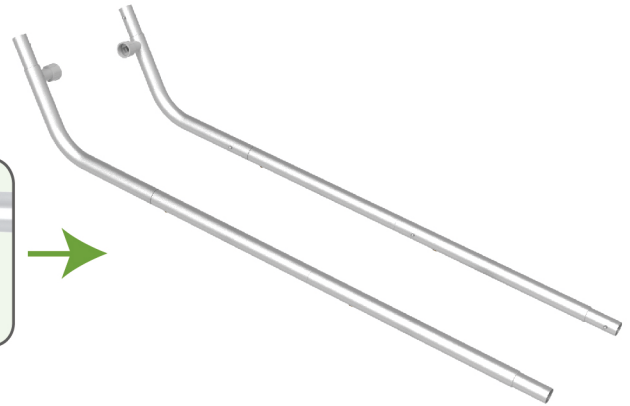
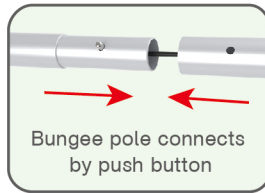


(3) Brochure rack x 2 / Screws x 4  
Tablet PC holder x1



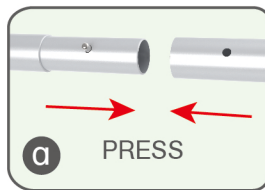
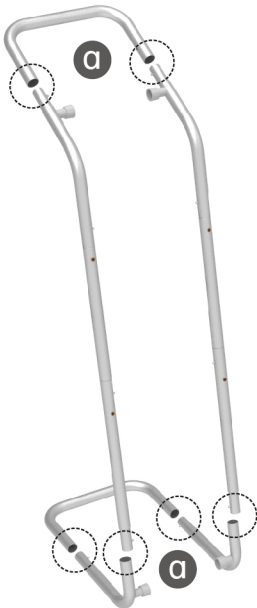
### STEP 01

To Connect the tubes according to the labellings



### STEP 02

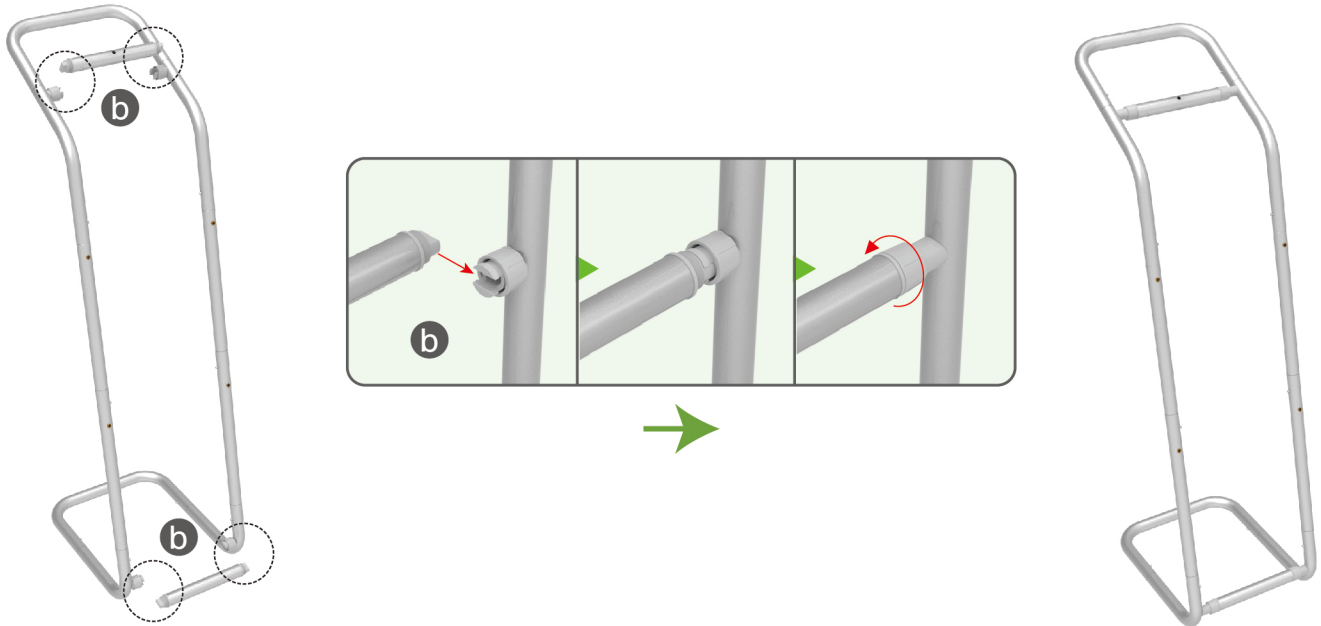
To connect 2 long side tubes by the corner pieces



## STEPS

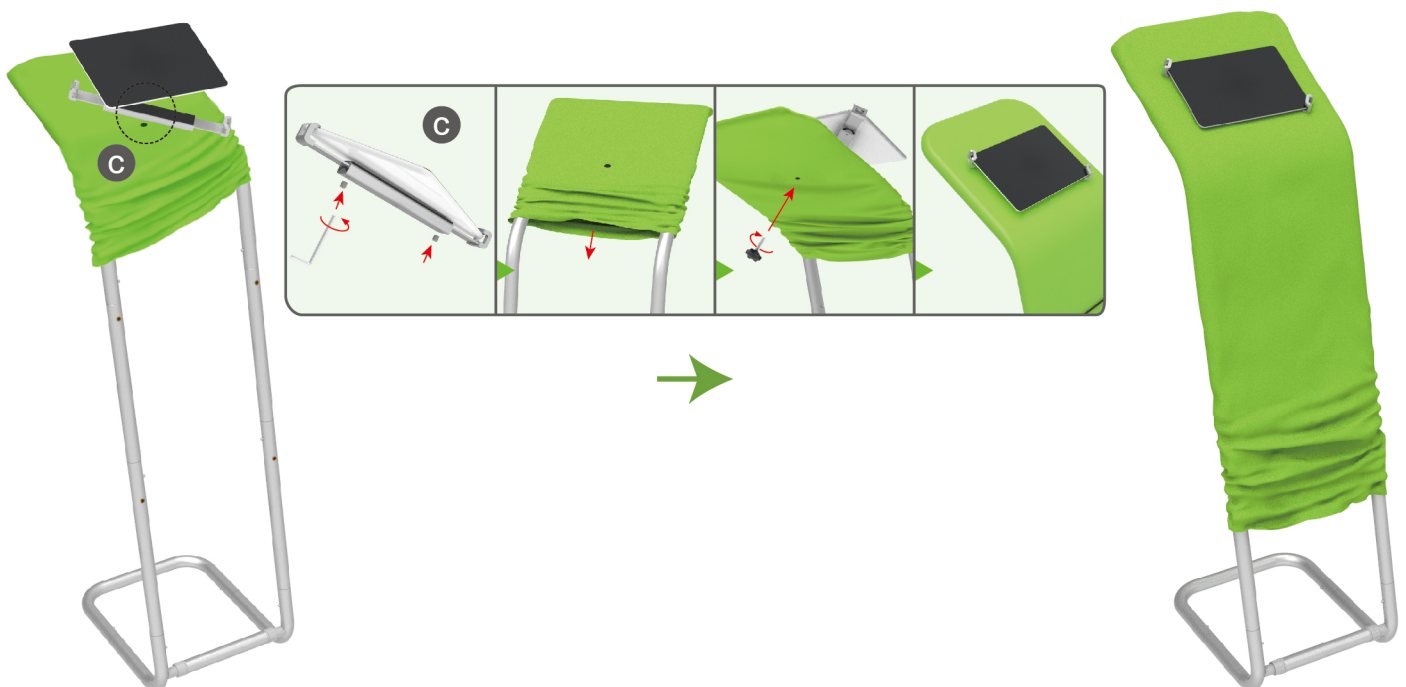
### STEP 03

To install the cross bar according to labellings



### STEP 04

To wrap the fabric from top to the middle of frame, then put the iPad in the holder and adjust the holder to right size and lock it by Allen Key Afterwards, install the set to the display stand.



## STEPS

### STEP 05

To pull the fabric banner to bottom and zip up.



### STEP 06

To Install 2 racks by screws in position

