

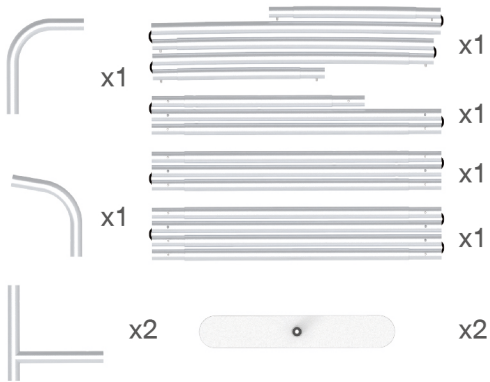
# INSTRUCTION



**10X20FT-BOOTH-Q**

## STEPS

### (1) Hardware

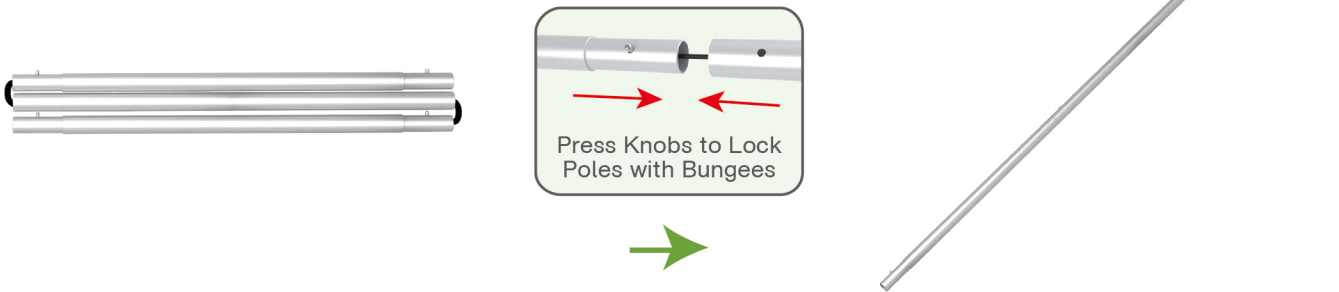


### (2) Printed Graphic Fabric Banner (Optional)



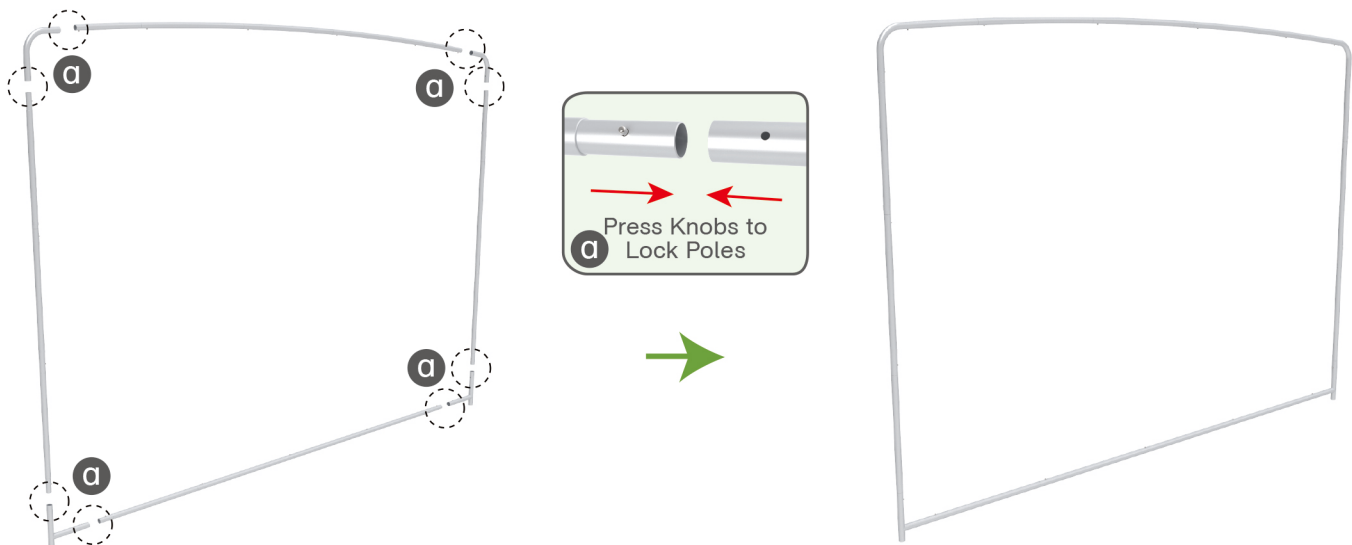
### STEP 01

Connect to make long poles according to labelings.



### STEP 02

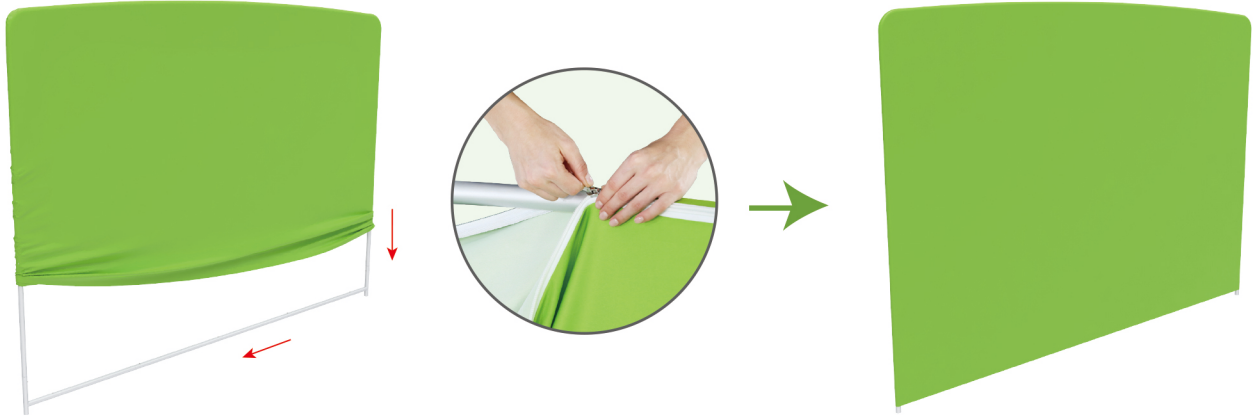
Connect long poles with corner poles according to labelings, connect support pole onto frame.



## STEPS

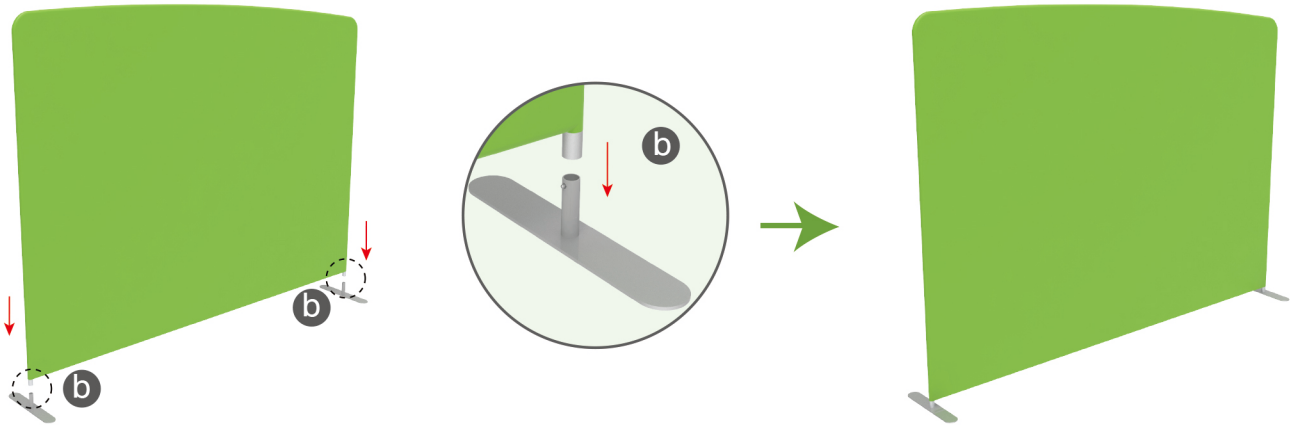
### STEP 03

Slide fabric banner on frame from top and zip up at bottom.

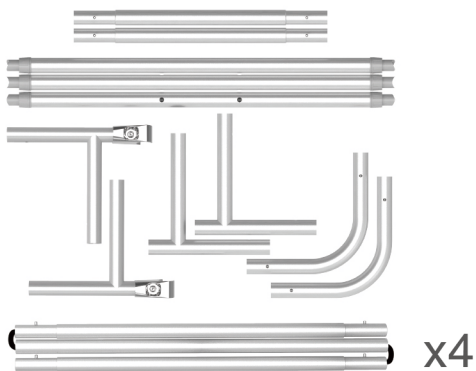


### STEP 04

Insert display stand onto feet by pressing their knobs.



(1) Hardware

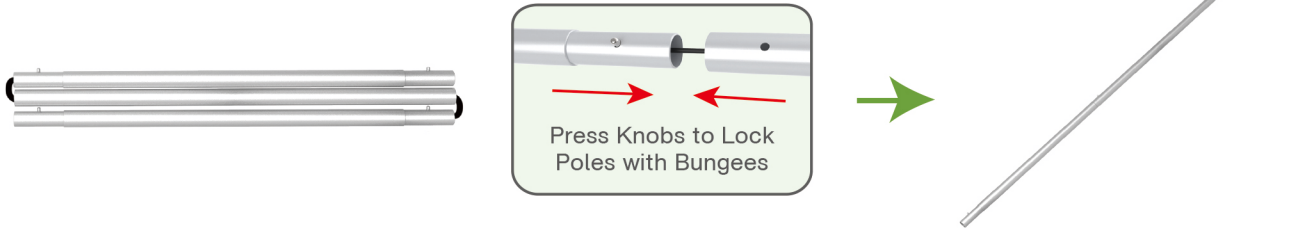


(2) Printed Graphic Fabric Banner (Optional)

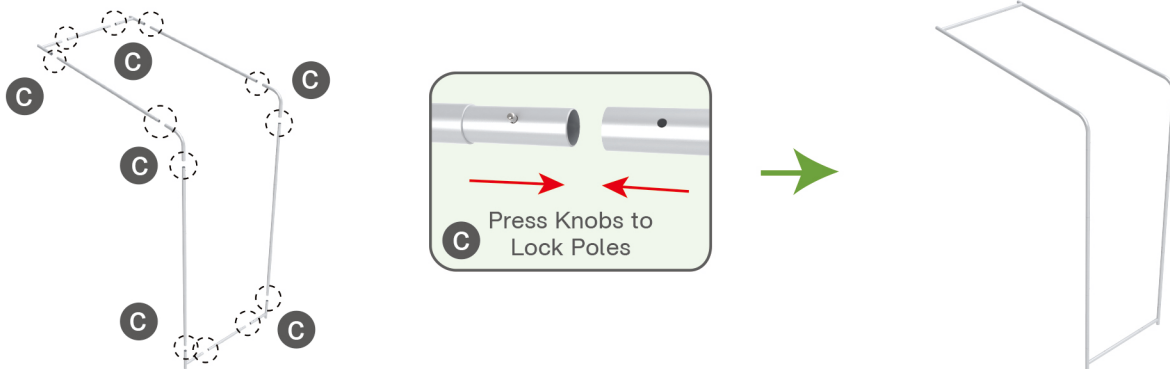


## STEPS

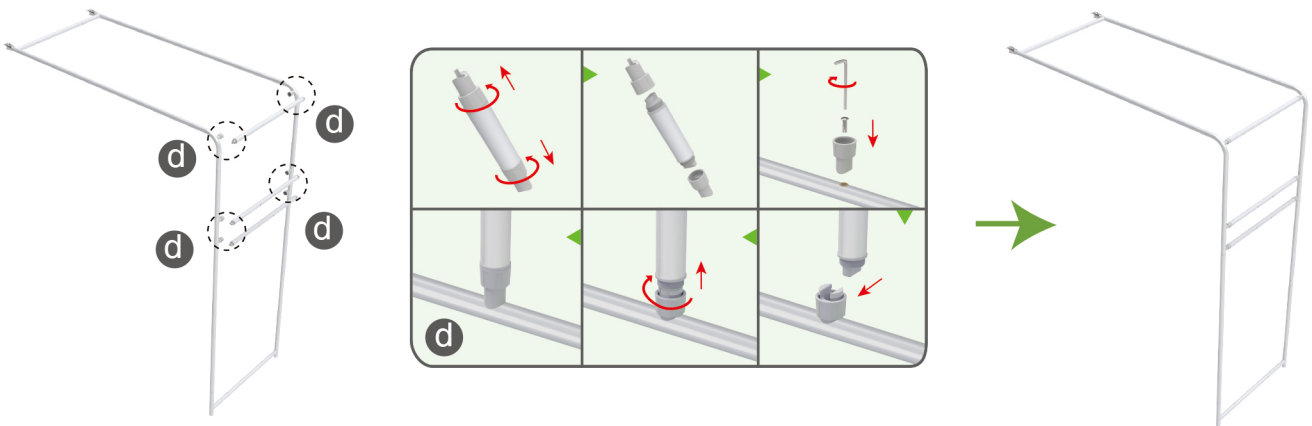
**STEP 01** Connect to make long poles according to labelings.



**STEP 02** Connect long poles with corner poles according to labelings.



**STEP 03** Connect support poles onto frame.



**STEP 04** Slide fabric banner on frame from top and zip up at bottom.



## STEPS

(1) Hardware

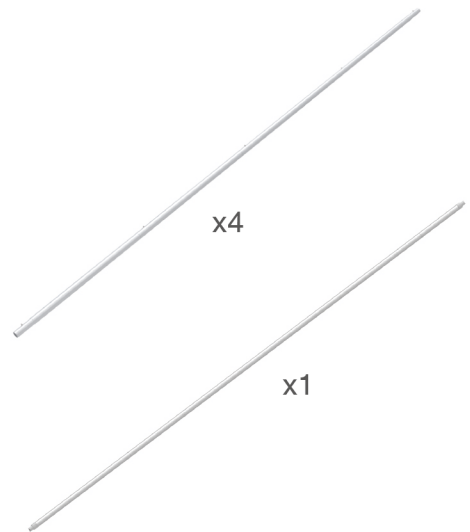
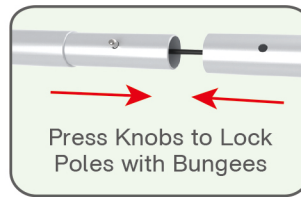


(2) Printed Graphic Fabric Banner (Optional)



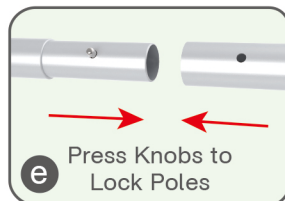
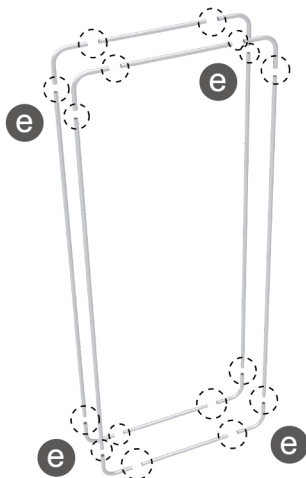
### STEP 01

Connect to make long poles according to labelings.



### STEP 02

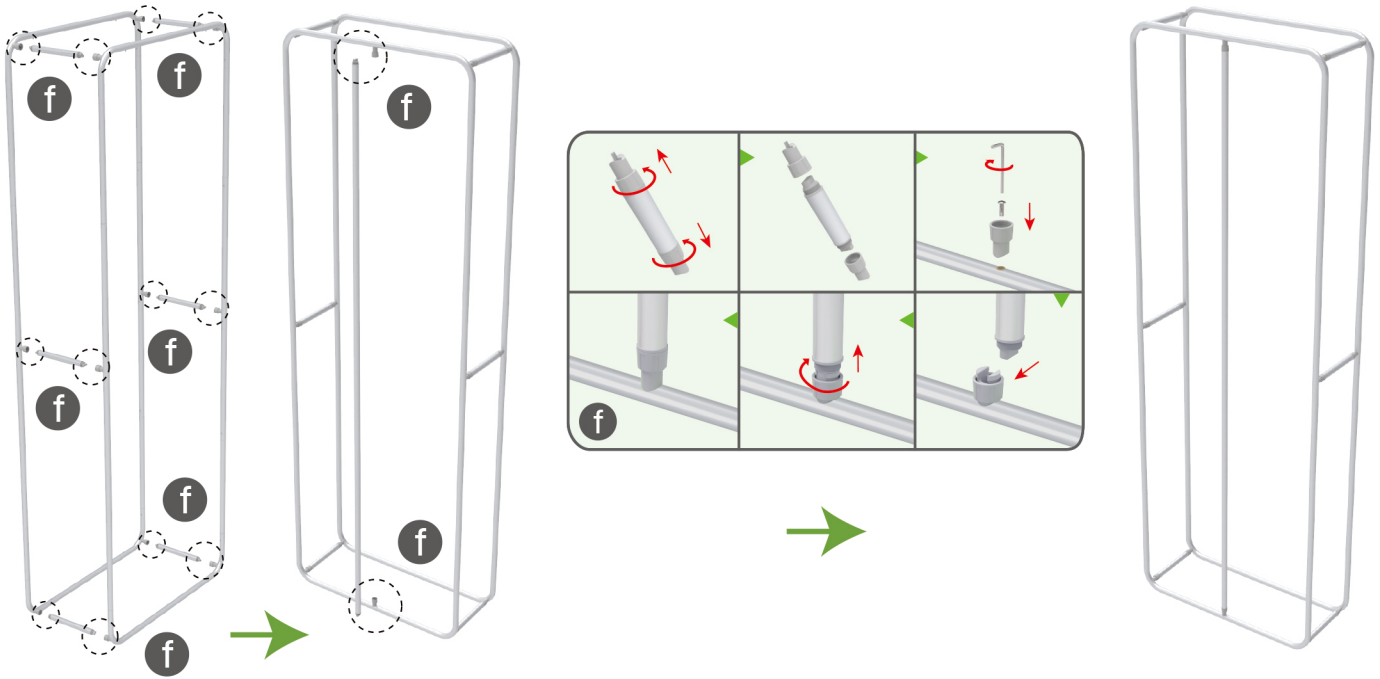
Connect long poles with corner poles according to labelings.



## STEPS

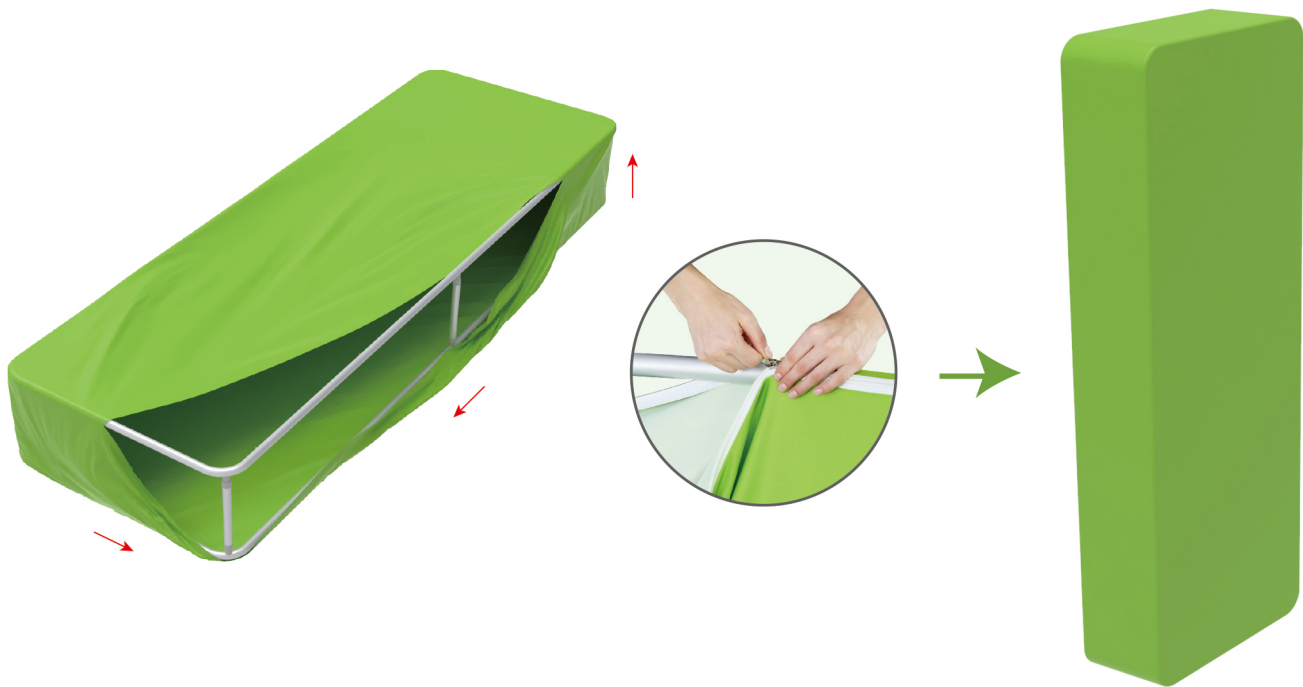
### STEP 03

Connect support poles onto column frame.



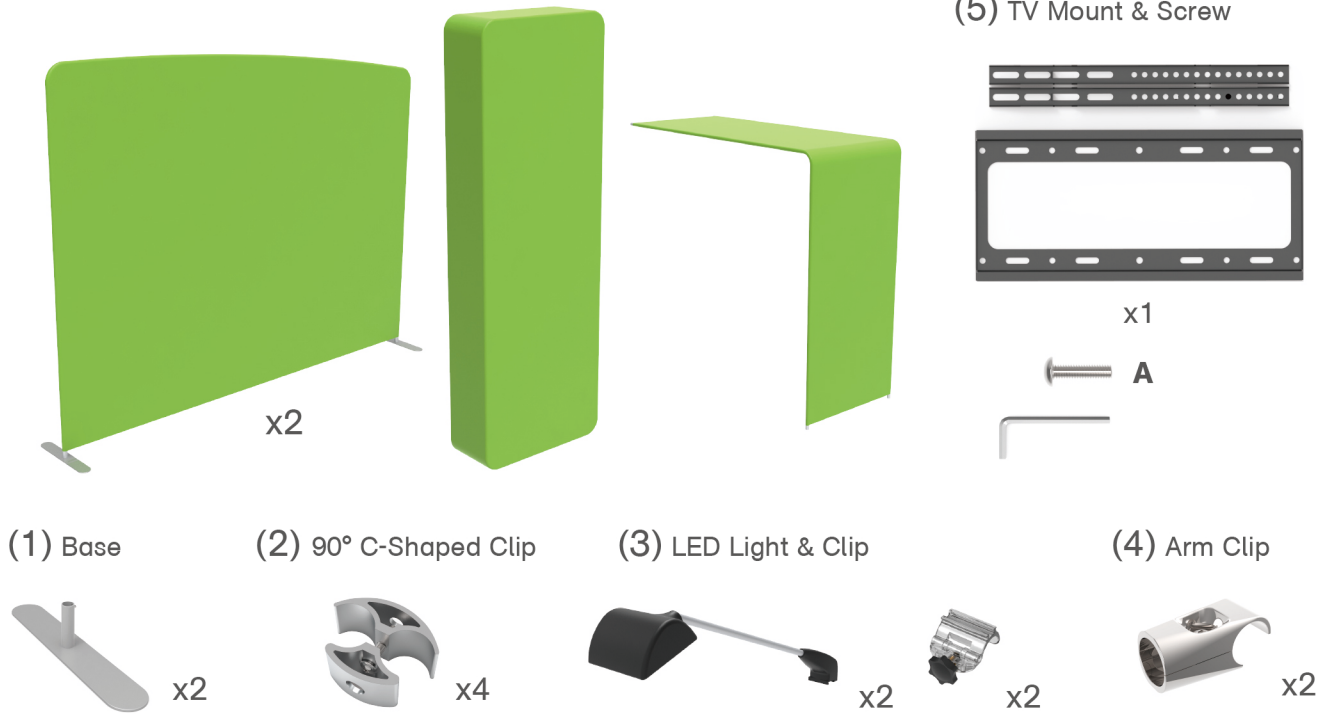
### STEP 04

Slide fabric banner on frame from top and zip up at bottom.

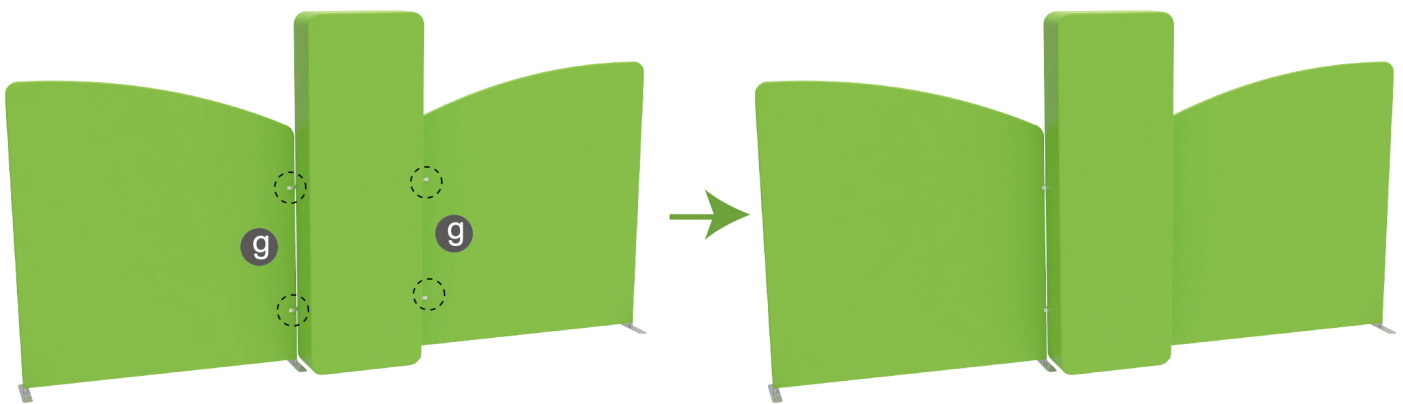
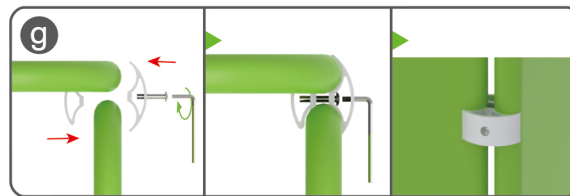


## STEPS

### Booth Set Assembly



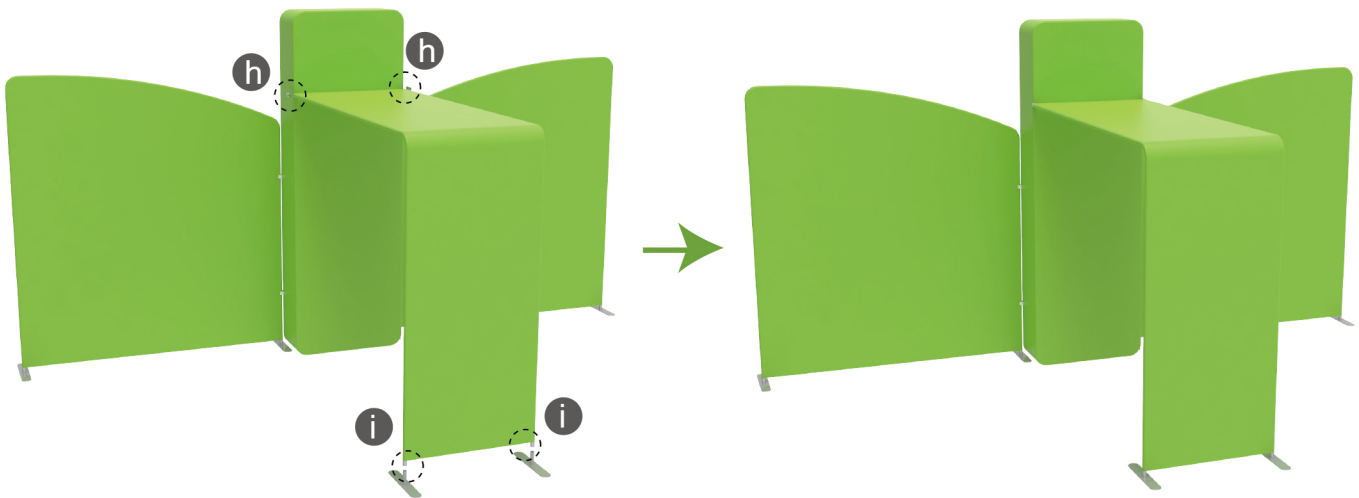
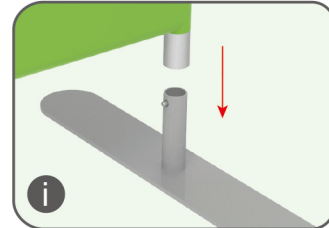
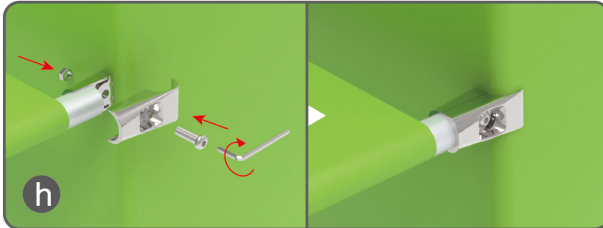
**STEP 01** Interconnect display stands with C-shaped clips.



## STEPS

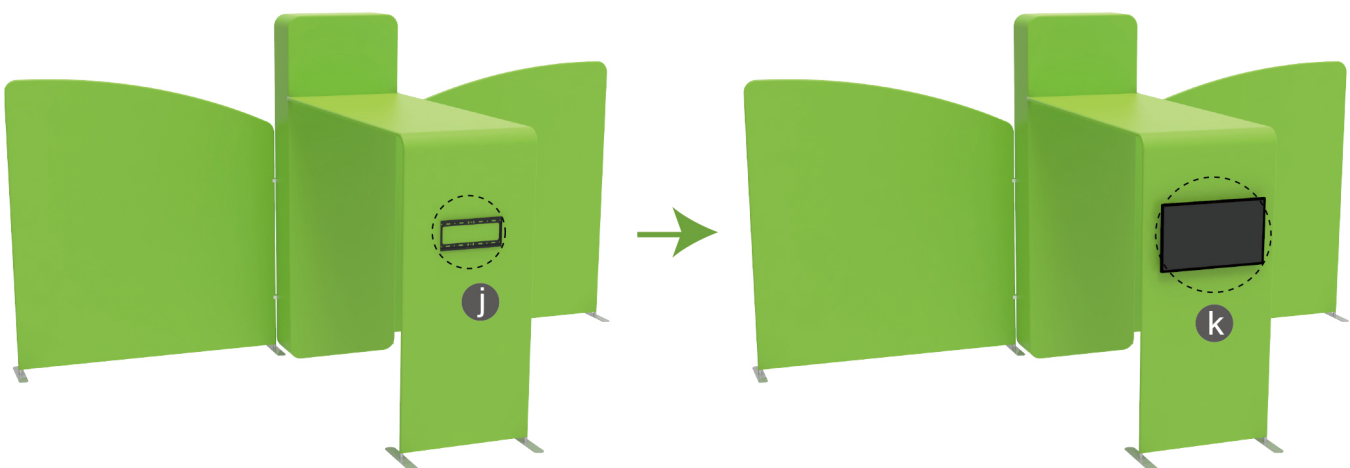
### STEP 02

Connect display stands with arm clips and Insert display stands onto feet by pressing their knobs.



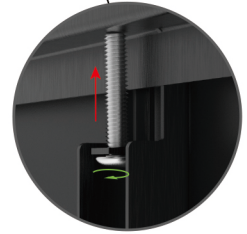
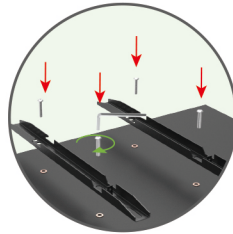
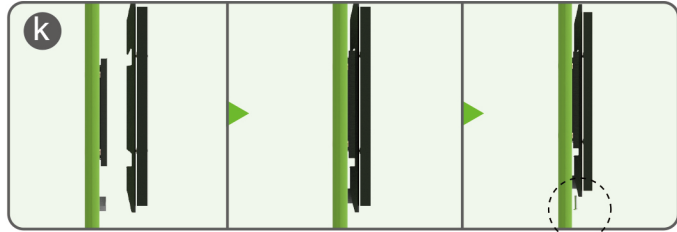
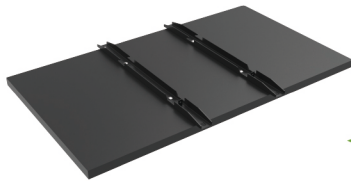
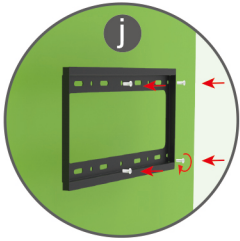
### STEP 03

Screw TV mount with hex wrench.



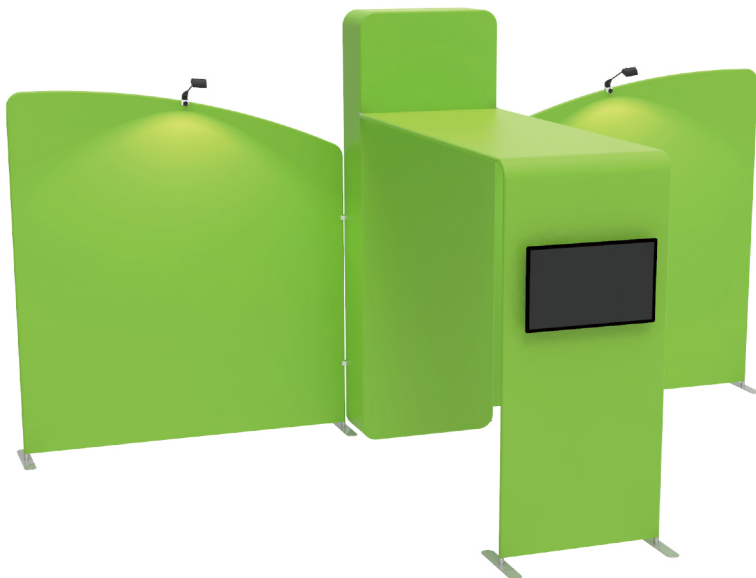
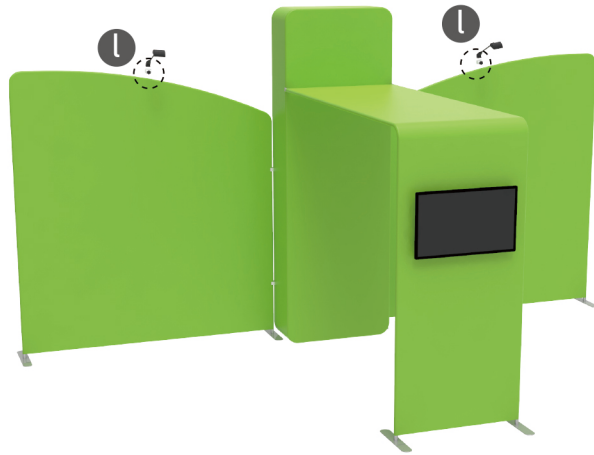
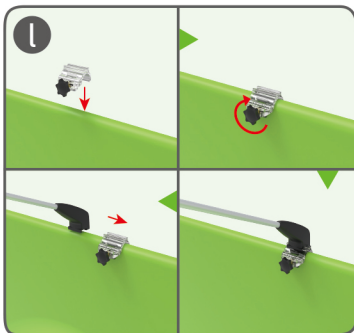


## STEPS



### STEP 04

Screw light clips at top of display stands, slide lights onto them and adjust their direction.



## 10X20FT-BOOTH-Q

## STEPS

(1) Durable Plastic Hard Case, Aluminum Support Poles

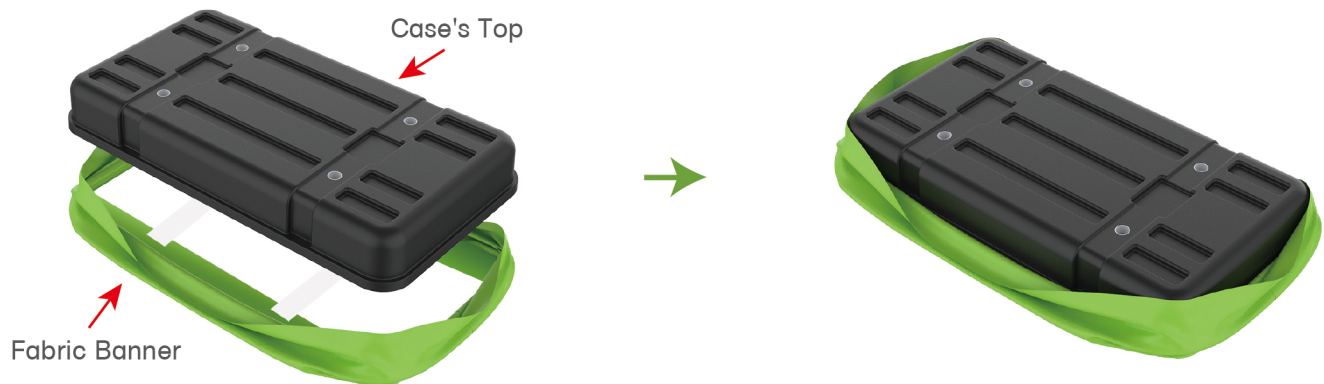


(2) Printed Graphic Fabric Banner



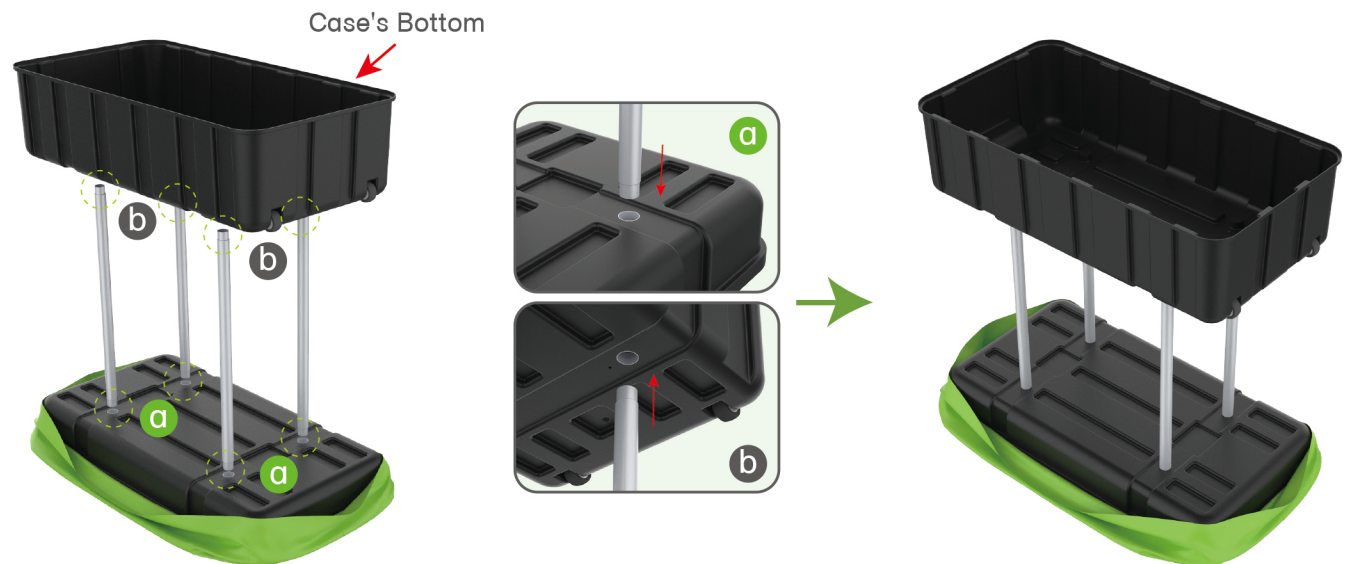
### STEP 01

Put hard case's top into fabric banner.



### STEP 02

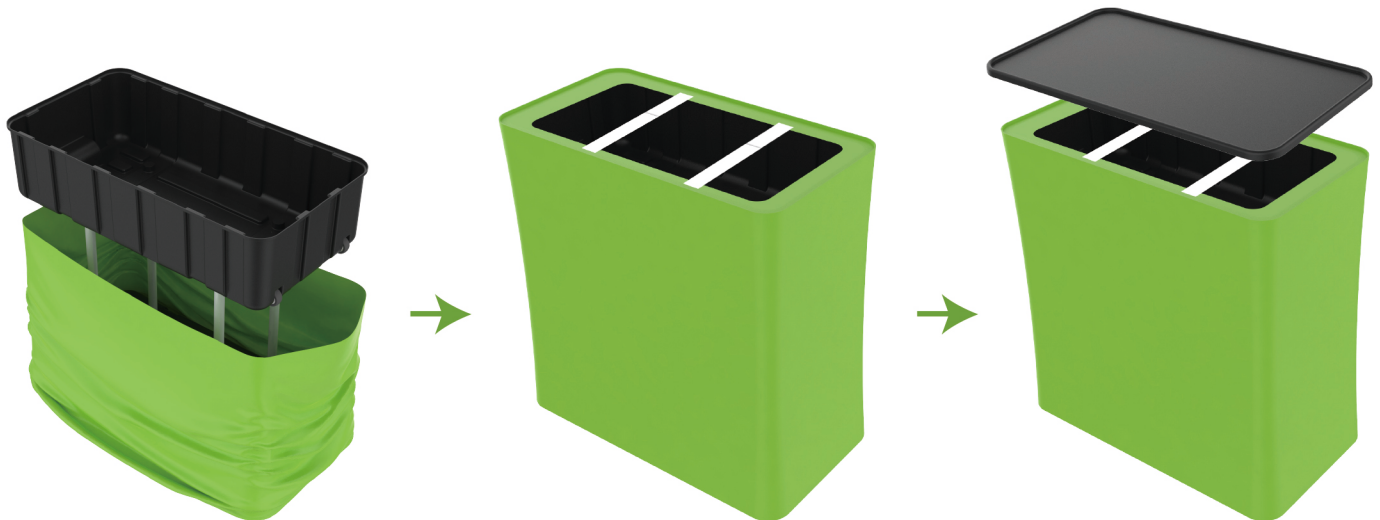
Insert support poles into hard case's top & bottom.



### STEPS

#### STEP 04

Wrap fabric banner from bottom to top & twist it to be smooth, lay hard case's intermediate panel on podium's top.

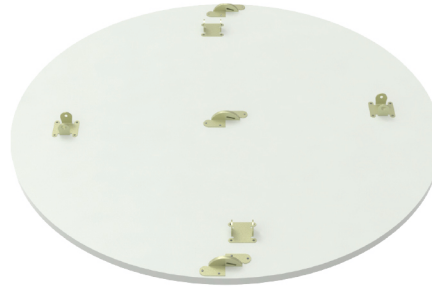


## STEPS

### (1) Hardware



### (2) Countertop Panel



### (3) Fixing Accessory

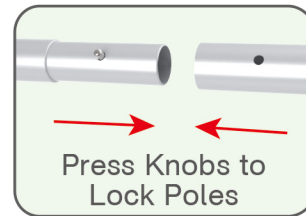


### (4) Printed Graphic Fabric Banner



#### STEP 01

Connect to make long poles according to labelings.



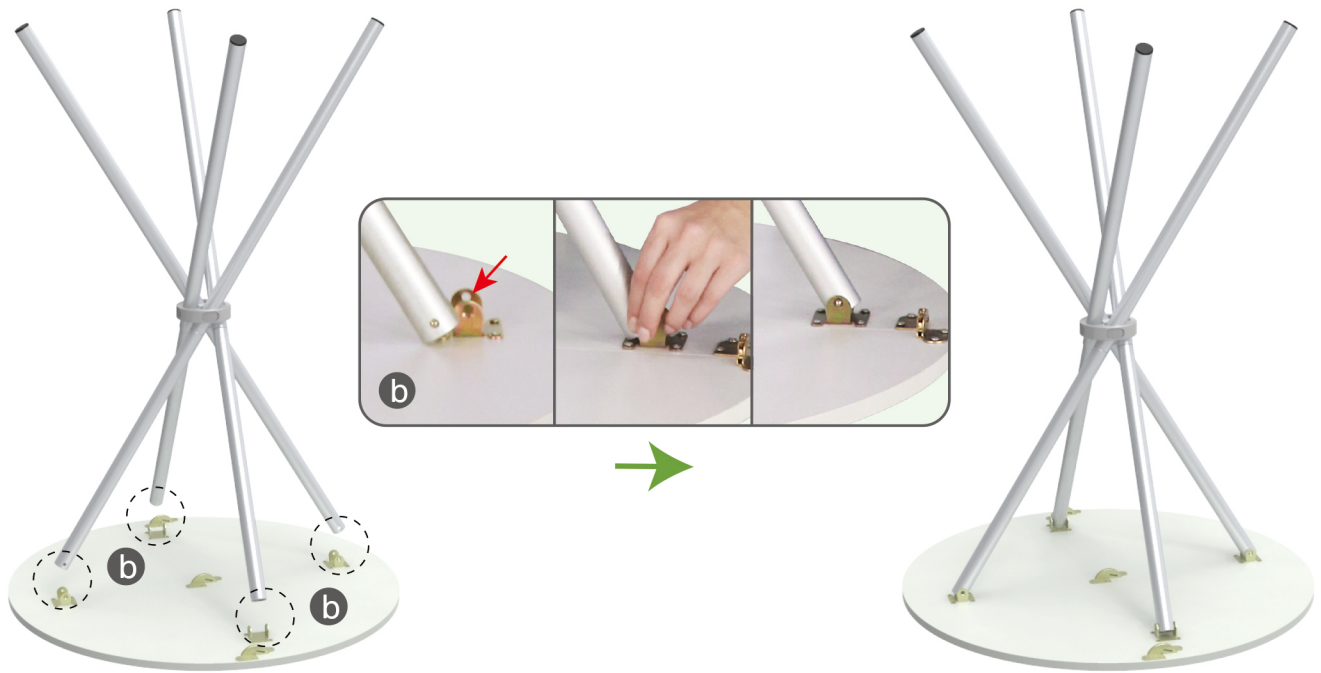
#### STEP 02

Insert poles into fixing accessory until you hear a 'Ding' sound to make poles' knobs clip into it & its concave parts pop out.



## STEPS

**STEP 03** Press poles' knobs to clip into countertop's slot.



**STEP 04**

Wrap fabric banner from top to bottom, put poles into pockets & zip up.

